

ภาคผนวกที่ 7

---

แบบบันทึกการตรวจสอบระบบป้องกันอัคคีภัย

# Engineering Department

## FLS - 10 : Portable Fire Extinguishers

10-02 Record of monthly inspection of all Portable Fire Extinguishers.

Month: January ..... Year: 2025 .....

✓ Sep 13/2025 1/00 26  
- 1/00 26 9  
- 1/00 26 33

Item no.	FLS CODE	Area		Fire Extinguisher							Checked by	Date	Remark
				Type of Chemical			Physical		Gauge				
		Section	Location	Dry	Halotron	Wet chemical	Normal	Abnormal	Status	Pressure			
1	ACP-PFE-001 ✓	Floor 1/1	1101		✓		✓		✓	195 PSI	m/w	18/1/25	
2	ACP-PFE-002 ✓	Floor 1/2	1206		✓		✓		✓	195 PSI	w	18/1/25	
3	ACP-PFE-003 ✓	Floor 2/1	2101		✓		✓		✓	175 PSI	m/w	18/1/25	
4	ACP-PFE-004 ✓	Floor 2/2	2204		✓		✓		✓	195 PSI	m/w	18-1-25	
5	ACP-PFE-005 ✓	Floor 3/1	3101		✓		✓		✓	195 PSI	m/w	"	
6	ACP-PFE-006 ✓	Floor 3/2	3201		✓		✓		✓	195 PSI	m/w	18-1-25	
7	ACP-PFE-007	Floor 4/1	4101		✓		✓		✓	195 PSI	m/w	18/1/25	
8	ACP-PFE-008	Floor 4/2	4205		✗		✗		✓	195 PSI	m/w	18/1/25	✗
9	ACP-PFE-009	Floor 4/3	4305		✗		✗		✓	195 PSI	m/w	"	✗
10	ACP-PFE-010	Building 4	EE Room		✓		✓		✓	195 PSI	m/w	18/1/25	
11	ACP-PFE-011	Building 5	5105		✓		✓		✓	"	"	20/1/25	
12	ACP-PFE-012	Building 5	5205		✓		✓		✓	"	"	20/1/25	
13	ACP-PFE-013	Building 5	5305		✓		✓		✓	"	"	20/1/25	
14	ACP-PFE-014	Building 7	Coridor B7FL1		✓		✓		✓	195 PSI	m/w	16/1/25	
15	ACP-PFE-015	Building 7	Store B7FL 2		✓		✓		✓	195 PSI	m/w	16/1/25	
16	ACP-PFE-016	Building 7	Store B7FL 3		✓		✓		✓	195 PSI	m/w	16/1/25	
17	ACP-PFE-017	Building 7	7107		✓		✓		✓	195 PSI	m/w	16/1/25	
18	ACP-PFE-018	Building 7	7123		✓		✓		✓	195 PSI	m/w	16/1/25	
19	ACP-PFE-019	Building 7	7207		✓		✓		✓	195 PSI	m/w	16/1/25	
20	ACP-PFE-020	Building 7	7223		✓		✓		✓	195 PSI	m/w	16/1/25	
21	ACP-PFE-021	Building 7	7307		✓		✓		✓	195 PSI	m/w	16/1/25	
22	ACP-PFE-022	Building 7	7323		✓		✓		✓	195 PSI	m/w	16/1/25	
23	ACP-PFE-023	Lagritta	La Gritta Kitchen			✓	✓	✓	✓	195 PSI	m/w	18/1/25	
24	ACP-PFE-024	Lagritta	La Gritta Kitchen		✗	✓	✓		✓	"	m/w	18/1/25	
25	ACP-PFE-025 ✓	Lagritta Bar	La Gritta bar										
26	ACP-PFE-026 ✓	Main Store	Main Store		✓		✓	✓	✓	195 PSI	m/w	20/1/25	



Item no.	FLS CODE	Area		Fire Extinguisher						Checked by	Date	Remark	
				Type of Chemical			Physical		Gauge				
		Section	Location	Dry	Halotron	Wet chemical	Normal	Abnormal	Status				Pressure
27	ACP-PFE-027 ✓	Building 1	In Garden Room		/		/		/	195 PSI	n	18-1-25	
28	ACP-PFE-028 ✓	Building 1	In Florist Room		/		/		/	195 PSI	n	18/1/25	
29	ACP-PFE-029 ✓	Garbage	The Room		/		/		/	195 PSI	ms/m	18/1/25	
30	ACP-PFE-030 ✓	Garbage	The Room		/		/		/	n	n	n	
31	ACP-PFE-031 ✓	Staff Canteer	In The Kitchen		/		/		/	n	n	n	
32	ACP-PFE-032 ✓	Staff Canteer	In The Kitchen		/		/		/	n	n	n	
33	ACP-PFE-033 ✓	Staff Canteer	In The Kitchen		/		/		/	n	n	n	11th Label Pass / OK
34	ACP-PFE-034 ✓	Staff Canteer	Station Gas		/		/		/	n	n	n	
35	ACP-PFE-035 ✓	Male Locker	In Staff Toilets		/		/		/	n	ms/m	18/1/25	
36	ACP-PFE-036	Female Locker	In Staff Toilets		/		/		/	n	n		
37	ACP-PFE-037 ✓	HR. Room	In HR. Room		/		/		/	n	n	18/1/25	
38	ACP-PFE-038 ✓	MDB3	Out HR. Room		/		/		/	n	n	18/1/25	
39	ACP-PFE-039	Lagritta Pool	Lagritta Pool		/		/		/	n	n	18/1/25	
40	ACP-PFE-040 ✓	Lobby	Entrance (OPR)		/		/		/	n	n	n	
41	ACP-PFE-041 ✓	Store bell	In The Room		/		/		/	195 PSI	n	18/1/25	
42	ACP-PFE-042 ✓	Executive Offices	Door Offices		/		/		/	195 PSI	n	n	
43	ACP-PFE-043 ✓	Lagritta Station Gas	Lobby		/		/		/	195 PSI	n	18-1-25	1. on 18/1/25
44	ACP-PFE-044 ✓	Lagritta Station Gas	Lobby		/		/		/	195 PSI	n	18-1-25	1. on 18/1/25
45	ACP-PFE-045 ✓	Secueity No.1	Enteance		/		/		/	195 PSI	n	20-1-25	1. on 18/1/25
46	ACP-PFE-046 ✓	Secueity No.2	Lobby		/		/		/	195 PSI	n	20-1-25	1. on 18/1/25
47	ACP-PFE-047 ✓	Secueity No.3	Old Time Kepper		/		/		/	195 PSI	n	20-1-25	1. on 18/1/25
48	ACP-PFE-048 ✓	Accounting	In The Room		/		/		/	195 PSI	n	18-1-25	
49	ACP-PFE-049 ✓	Main Kitchen	Entrance		/		/		/	195 PSI	n	n	
50	ACP-PFE-050 ✓	Main Kitchen	Entrance		/		/		/	195 PSI	n	n	
51	ACP-PFE-051	Main Kitchen	Out The Room		/		/		/	195 PSI	n	n	
52	ACP-PFE-052 ✓	Main Kitchen	In The Room		/		/		/	195 PSI	n	n	
53	ACP-PFE-053	House Keepping	In The Room		/		/		/	195 PSI	n	18-1-25	
54	ACP-PFE-054 ✓	Generator MDB 1	Entrance		/		/		/	n	n	20-1-25	
55	ACP-PFE-055 ✓	Generator MDB 1	In The Room		/		/		/	n	n	20-1-25	
56	ACP-PFE-056 ✓	Laundry	Up The Stairs		/		/		/	195 PSI	n	20-1-25	
57	ACP-PFE-057	Laundry	Laundry		/		/		/	195 PSI	n	20-1-25	
58	ACP-PFE-058 ✓	Laundry	Laundry		/		/		/	195 PSI	n	20-1-25	
59	ACP-PFE-059 ✓	Laundry	Laundry		/		/		/	n	n	20-1-25	



Item no.	FLS CODE	Area		Fire Extinguisher							Checked by	Date	Remark
				Type of Chemical			Physical		Gauge				
		Section	Location	Dry	Halotron	Wet chemical	Normal	Abnormal	Status	Pressure			
60	ACP-PFE-060	Laundry	Laundry		✓		✓		✓	195 PSI	n	20/1/23	
61	ACP-PFE-061 ✓	Boiler room	Boiler room		✓		✓		✓	195 PSI	n	20/1/23	
62	ACP-PFE-062	Eng. Work Shop	Tools Room		✓		✓		✓	195 PSI	ns	20/1/23	
63	ACP-PFE-063	Eng. Work Shop	MDB Room		✓		✓		✓	195 PSI	ns	20/1/23	
64	ACP-PFE-064	Eng. Work Shop	Painter Room		✓		✓		✓	195 PSI	ns	20/1/23	
65	ACP-PFE-065 ✓	Oil Station	Desel Tank		✓		✓		✓	195 PSI	n	20-1-23	
66	ACP-PFE-066 ✓	Walkway Rim talay			✓		✓		✓	195 PSI	ns/m	16-9-23	
67	ACP-PFE-067	Voyagerlounge			✓		✓		✓	195 PSI	n	18-1-23	7/2/23 11:00 AM FTH
68	ACP-PFE-068 ✓	Gas Station	Laundry		✓		✓		✓	195 PSI	n	20-1-23	
69	ACP-PFE-069 ✓	Mortorbike Garage1			✓		✓		✓	195 PSI	ns/m	20-1-23	
70	ACP-PFE-070 ✓	Mortorbike Garage2			✓		✓		✓	195 PSI	ns	20-1-23	
71	ACP-PFE-071	Rimtalay pump room			✓		✓		✓	195 PSI	ns/m	16-1-23	
72	ACP-PFE-072 ✓	Kid club			✓		✓		✓	195 PSI	ns/m	18-1-23	
73	ACP-PFE-073 ✓	Fire Training			✓		✓		✓	195 PSI	ns/m	18-1-23	
74	ACP-PFE-074 ✓	PABX room			✓		✓		✓	195 PSI	n	18-1-23	100mm
75	ACP-PFE-075 ✓	EE room B.2			✓		✓		✓	195 PSI	n	18-1-23	100mm
76	ACP-PFE-076	Pantry samurt bar 1	Samut Bar		✓		✓		✓	195 PSI	n	18-1-23	7/2/23 11:00 AM FTH
77	ACP-PFE-077	Pantry samurt bar 2	Samut Bar		✓		✓		✓	195 PSI	n	18-1-23	1
78	ACP-PFE-078	Idea Station Gas	Idea Room		✓		✓		✓	195 PSI	n	20-1-23	
79	ACP-PFE-079 ✓	Sport Center			✓		✓		✓	195 PSI	n	20-1-23	
80	ACP-PFE-080 ✓	Sport Center			✓		✓		✓	195 PSI	n	20-1-23	
81	ACP-PFE-081 ✓	Server Room			✓		✓		✓	195 PSI	ns/m	18-1-23	
82	ACP-PFE-082 ✓	SPA	Front Spa		✓		✓		✓	195 PSI	n	20-1-23	
83	ACP-PFE-083 ✓		Spa Reception		✓		✓		✓	195 PSI	n	18-1-23	
84	ACP-PFE-084		Spa Sala 1		✓		✓		✓	195 PSI	n	20-1-23	
85	ACP-PFE-085 ✓		Spa Sala 2		✓		✓		✓	195 PSI	n	20-1-23	
86	ACP-PFE-086		Spa Sala 3		✓		✓		✓	195 PSI	n	18-1-23	
87	ACP-PFE-087		Spa Sala 4		✓		✓		✓	195 PSI	n	20-1-23	
88	ACP-PFE-088 ✓	Fitness			✓		✓		✓	195 PSI	ns/m	18-1-23	



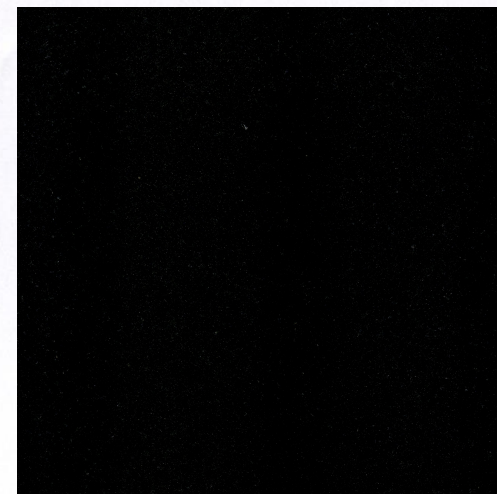
Item no.	FLS CODE	Area		Fire Extinguisher							Checked by	Date	Remark
				Type of Chemical			Physical		Gauge				
		Section	Location	Dry	Halotron	Wet chemical	Normal	Abnormal	Status	Pressure			
89	ACP-PFE-089	Lift			/		/		/	195 psi	✓	20/1/23	With Label ok, n/a
90	ACP-PFE-090 ✓	GM House			✓		✓		✓	195 psi	✓	20/1/25	
91	ACP-PFE-091 ✓	Jetty 1		✗	/		✓		✓	195 psi	✓	18/1/25	
92	ACP-PFE-092 ✓	Jetty 2		✗	/		/		✓	195 psi	✓	18/1/23	
93	ACP-PFE-093 68/1	Gas Station	Laundry		/		/		✓	195 psi	✓	20/1/23	

Acknowledge by: mb

Fire-Life Safety Teamleader

Approved by: .....

Heads of Department





# Engineering Department

## FLS - 10 : Portable Fire Extinguishers

FLS 10-02 Record of monthly inspection of all Portable Fire Extinguishers.

Month: January Year: 2025

Item No.	FLS CODE	Area		Extinguisher (Dry chemical)							Checked by	Date	Remark
				Type of Chemical			Physical		Gauge				
		Section	Location	Dry	Halotron	Wet chemical	Normal	Abnormal	Status	Pressure			
1	ACP-PFE-093	Ocean Wing 1	6000		/		/		OK	195 Psi	NR	20-1-25	
2	ACP-PFE-094		6002		/		/		OK	195 Psi	NR	20-1-25	
3	ACP-PFE-095		6004		/		/		OK	195 Psi	NR	20-1-25	
4	ACP-PFE-096	Ocean Wing 2	6006		/		/		OK	195 Psi	NR	20-1-25	
5	ACP-PFE-097		6008		/		/		OK	195 Psi	NR	20-1-25	
6	ACP-PFE-098		6010		/		/		OK	195 Psi	NR	20-1-25	
7	ACP-PFE-099	Ocean Wing 3	6012		/		/		OK	195 Psi	NR	20-1-25	
8	ACP-PFE-100		6015		/		/		OK	195 Psi	NR	20-1-25	
9	ACP-PFE-101		6016		/		/		OK	195 Psi	NR	20-1-25	
10	ACP-PFE-102	Ocean Wing 4	6017		/		/		OK	195 Psi	NR	20-1-25	
11	ACP-PFE-103		6020		/		/		OK	195 Psi	NR	20-1-25	
12	ACP-PFE-104	Ocean Wing 5	6021		/		/		OK	195 Psi	NR	20-1-25	
13	ACP-PFE-105		6023		/		/		OK	195 Psi	NR	20-1-25	
14	ACP-PFE-106	Ocean Wing 6	6024		/		/		OK	195 Psi	NR	20-1-25	
15	ACP-PFE-107		6026		/		/		OK	195 Psi	NR	20-1-25	
16	ACP-PFE-108	Ocean Wing 7	6028		/		/		OK	195 Psi	NR	20-1-25	
17	ACP-PFE-109		6031		/		/		OK	195 Psi	NR	20-1-25	
18	ACP-PFE-110	Ocean Wing 8	6032		/		/		OK	195 Psi	NR	20-1-25	
19	ACP-PFE-111		6035		/		/		OK	195 Psi	NR	20-1-25	
20	ACP-PFE-112	Ocean Wing 9	6036		/		/		OK	195 Psi	NR	20-1-25	
21	ACP-PFE-113		6038		/		/		OK	195 Psi	NR	20-1-25	
22	ACP-PFE-114		6040		/		/		OK	195 Psi	NR	20-1-25	
23	ACP-PFE-0115	Ocean Wing 10	6042		/		/		OK	195 Psi	NR	20-1-25	
24	ACP-PFE-0116		6044		/		/		OK	195 Psi	NR	20-1-25	



# Engineering Department

## FLS - 10 : Portable Fire Extinguishers

FLS 10-02 Record of monthly inspection of all Portable Fire Extinguishers.

Month: January Year: 2025

Item No.	FLS CODE	Area		Extinguisher (Dry chemical)							Checked by	Date	Remark
				Type of Chemical			Physical		Gauge				
		Section	Location	Dry	Halotron	Wet chemical	Normal	Abnormal	Status	Pressure			
25	ACP-PFE-0117	Ocean Wing 11	6046		/		/		OK	195 PSI	MS	20-1-25	
26	ACP-PFE-0118		6048		✓		/		OK	195 PSI	MS	20-1-25	
27	ACP-PFE-0119		6050		/		/		OK	195 PSI	MS	20-1-25	
28	ACP-PFE-0120		6052		/		/		OK	195 PSI	MS	20-1-25	
29	ACP-PFE-0121	Ocean Wing 12	6053		/		/		OK	195 PSI	MS	20-1-25	
30	ACP-PFE-0122		6055		/		/		OK	195 PSI	MS	20-1-25	
31	ACP-PFE-0123		6057		/		/		OK	195 PSI	MS	20-1-25	
32	ACP-PFE-0124	Ocean Wing 13	6058		/		/		OK	195 PSI	MS	20-1-25	
33	ACP-PFE-0125		6060		/		/		OK	195 PSI	MS	20-1-25	
34	ACP-PFE-0126		6062		/		/		OK	195 PSI	MS	20-1-25	
35	ACP-PFE-0127	Ocean Wing 14	6063		/		/		OK	195 PSI	MS	20-1-25	
36	ACP-PFE-0128		6066	/			/		OK	195 PSI	MS	20-1-25	
37	ACP-PFE-0129	Ocean Wing 15	6067		/		/		OK	195 PSI	MS	20-1-25	
38	ACP-PFE-0130		6069		/		/		OK	195 PSI	MS	20-1-25	
39	ACP-PFE-0131	Ocean Wing 16	6071		/		/		OK	195 PSI	MS	20-1-25	
40	ACP-PFE-0132		6073		/		/		OK	195 PSI	MS	20-1-25	
41	ACP-PFE-0133	Ocean Wing 17	6075		/		/		OK	195 PSI	MS	20-1-25	
42	ACP-PFE-0134		6077		/		/		OK	195 PSI	MS	20-1-25	
43	ACP-PFE-0135	Ocean Wing 18	6079		/		/		OK	195 PSI	MS	20-1-25	
44	ACP-PFE-0136		6081		/		/		OK	195 PSI	MS	20-1-25	
45	ACP-PFE-0137	Ocean Wing 19	6083		/		/		OK	195 PSI	MS	20-1-25	
46	ACP-PFE-0138		6085		/		/		OK	195 PSI	MS	20-1-25	
47	ACP-PFE-0139		6086		/		/		OK	195 PSI	MS	20-1-25	
48	ACP-PFE-0140	Ocean Wing 20	6087		/		/		OK	195 PSI	MS	20-1-25	
49	ACP-PFE-0141		6089		/		/		OK	195 PSI	MS	20-1-25	



# Engineering Department

## FLS - 10 : Portable Fire Extinguishers

FLS 10-02 Record of monthly inspection of all Portable Fire Extinguishers.

Month: January Year: 2025

Item No.	FLS CODE	Area		Extinguisher (Dry chemical)							Checked by	Date	Remark
				Type of Chemical			Physical		Gauge				
		Section	Location	Dry	Halotron	Wet chemical	Normal	Abnormal	Status	Pressure			
50	ACP-PFE-0142		6090		/		/		OK	195 PSI	NR	20-1-25	
51	ACP-PFE-143	Ocean Wing 21	6091		/		/		OK	195 PSI	NR	20-1-25	
52	ACP-PFE-144		6093		/		/		OK	195 PSI	NR	20-1-25	
53	ACP-PFE-145		6096		/		/		OK	195 PSI	NR	20-1-25	
54	ACP-PFE-146	Ocean Wing 22	6097		/		/		OK	195 PSI	NR	20-1-25	
55	ACP-PFE-147		6099		/		/		OK	195 PSI	NR	20-1-25	
56	ACP-PFE-148		6101		/		/		OK	195 PSI	NR	20-1-25	
57	ACP-PFE-149	Ocean Wing 23	6103		/		/		OK	195 PSI	NR	20-1-25	
58	ACP-PFE-150		6105		/		/		OK	195 PSI	NR	20-1-25	
59	ACP-PFE-151		6107		/		/		OK	195 PSI	NR	20-1-25	
60	ACP-PFE-152	Ocean Wing 24	6109		/		/		OK	195 PSI	NR	20-1-25	
61	ACP-PFE-153		6112		/		/		OK	195 PSI	NR	20-1-25	
62	ACP-PFE-154	Ocean Wing 25	6114		/		/		OK	195 PSI	NR	20-1-25	
63	ACP-PFE-155		6116		/		/		OK	195 PSI	NR	20-1-25	
64	ACP-PFE-156	Ocean Wing 26	6118		/		/		OK	195 PSI	NR	20-1-25	
65	ACP-PFE-157		6120		/		/		OK	195 PSI	NR	20-1-25	
66	ACP-PFE-158	Ocean Wing 27	6121		/		/		OK	195 PSI	NR	20-1-25	
67	ACP-PFE-159		6123		/		/		OK	195 PSI	NR	20-1-25	
68	ACP-PFE-160	Ocean Wing 28	6124		/		/		OK	195 PSI	NR	20-1-25	
69	ACP-PFE-161		6126		/		/		OK	195 PSI	NR	20-1-25	
70	ACP-PFE-162	Ocean Wing 29	6127	/			/		OK	195 PSI	NR	20-1-25	
71	ACP-PFE-163		6128		/		/		OK	195 PSI	NR	20-1-25	
72	ACP-PFE-164	Ocean Wing 30	6129		/		/		OK	195 PSI	NR	19-1-25	19-1-25
73	ACP-PFE-165		6130		/		/		OK	195 PSI	NR	19-1-25	19-1-25



# Engineering Department

## FLS - 10 : Portable Fire Extinguishers

FLS 10-02 Record of monthly inspection of all Portable Fire Extinguishers.

Month: January Year: 2025

Item No.	FLS CODE	Area		Extinguisher (Dry chemical)							Checked by	Date	Remark
				Type of Chemical			Physical		Gauge				
		Section	Location	Dry	Halotron	Wet chemical	Normal	Abnormal	Status	Pressure			
74	ACP-PFE-166	Ocean Wing 31	6131		✓		✓		OK	195 PSI	nr	20-1-25	
75	ACP-PFE-167		6132		✓		✓		OK	195 PSI	nr	20-1-25	
76	ACP-PFE-168	Ocean Wing 32	6133		✓		✓		OK	195 PSI	nr	19-1-25	
77	ACP-PFE-169		6134		✓		✓		OK	195 PSI	nr	19-1-25	
78	ACP-PFE-170	Ocean Wing 33	6135		✓		✓		OK	195 PSI	nr	19-1-25	
79	ACP-PFE-171		6136		✓		✓		OK	195 PSI	nr	19-1-25	
80	ACP-PFE-172	Ocean Wing 34	6137		✓		✓		OK	195 PSI	nr	20-1-25	
81	ACP-PFE-173		6138		✓		✓		OK	195 PSI	nr	20-1-25	
82	ACP-PFE-174	Ocean Wing 35	6139		✓		✓		OK	195 PSI	nr	20-1-25	
83	ACP-PFE-175		6141		✓		✓		OK	195 PSI	nr	20-1-25	
84	ACP-PFE-176	Ocean Wing 36	6142		✓		✓		OK	195 PSI	nr	20-1-25	
85	ACP-PFE-177		6144		✓		✓		OK	195 PSI	nr	20-1-25	
86	ACP-PFE-178	Ocean Wing 37	6145	✓	✓		✓		OK	195 PSI	nr	20-1-25	
87	ACP-PFE-179		6147		✓	✓		✓		OK	195 PSI	nr	20-1-25
88	ACP-PFE-180	Ocean Wing 38	6148	✓			✓		OK	195 PSI	nr	20-1-25	
89	ACP-PFE-181		6149			✓		✓		OK	195 PSI	nr	20-1-25
90	ACP-PFE-182	Ocean Wing 39	6200	✓			✓		OK	195 PSI	nr	20-1-25	
91	ACP-PFE-183		6202	✓			✓		OK	195 PSI	nr	20-1-25	
92	ACP-PFE-184	Ocean Wing 40	6203		✓		✓		OK	195 PSI	nr	20-1-25	
93	ACP-PFE-185		6205	✓			✓		OK	195 PSI	nr	20-1-25	
94	ACP-PFE-186	Ocean Wing 41	6206	✓			✓		OK	195 PSI	nr	20-1-25	
95	ACP-PFE-187		6208	✓			✓		OK	195 PSI	nr	20-1-25	
96	ACP-PFE-188	Ocean Wing 42	6209	✓			✓		OK	195 PSI	nr	20-1-25	
97	ACP-PFE-189		6211	✓			✓		OK	195 PSI	nr	20-1-25	



# Engineering Department

## FLS - 10 : Portable Fire Extinguishers

FLS 10-02 Record of monthly inspection of all Portable Fire Extinguishers.

Month: January Year: 2025

Item No.	FLS CODE	Area		Extinguisher (Dry chemical)							Checked by	Date	Remark
				Type of Chemical			Physical		Gauge				
		Section	Location	Dry	Halotron	Wet chemical	Normal	Abnormal	Status	Pressure			
98	ACP-PFE-190	Ocean Wing 43	6212	✓			✓		OK	195 PSI	918	20-1-25	
99	ACP-PFE-191		6215		✓		✓		OK	195 PSI	918	20-1-25	
100	ACP-PFE-192	Ocean Wing 44	6216	✓			✓		OK	195 PSI	918	20-1-25	
101	ACP-PFE-193		6218	✓			✓		OK	195 PSI	918	20-1-25	
102	ACP-PFE-194	Ocean Wing 45	6219		✓		✓		OK	195 PSI	918	20-1-25	
103	ACP-PFE-195		6221	✓			✓		OK	195 PSI	918	20-1-25	
104	ACP-PFE-196	Ocean Wing 46	6222		✓		✓		OK	195 PSI	918	20-1-25	
105	ACP-PFE-197		6224		✓		✓		OK	195 PSI	918	20-1-25	
106	ACP-PFE-198	Ocean Wing 47	6225	✓			✓		OK	195 PSI	918	20-1-25	
107	ACP-PFE-199		6227		✓		✓		OK	195 PSI	918	20-1-25	
108	ACP-PFE-200	Ocean Wing 48	6228		✓		✓		OK	195 PSI	918	20-1-25	
109	ACP-PFE-201		6230	✓			✓		OK	195 PSI	918	20-1-25	
110	ACP-PFE-202	Ocean Wing 49	6231	✓			✓		OK	195 PSI	918	20-1-25	
111	ACP-PFE-203		6233	✓			✓		OK	195 PSI	918	20-1-25	
112	ACP-PFE-204	Ocean Wing 50	6234	✓			✓		OK	195 PSI	918	20-1-25	
113	ACP-PFE-205		6236	✓			✓		OK	195 PSI	918	20-1-25	
114	ACP-PFE-206	ARP	Club Pakarang		✓		✓		OK	195 PSI	918	20-1-25	
115	ACP-PFE-207	ARP	MDB 4		✓		✓		OK	195 PSI	918	20-1-25	
116	ACP-PFE-208	ARP	Club Pakarang 1				✓		OK	195 PSI	918	20-1-25	
117	ACP-PFE-209	ARP	Club Pakarang 2				✓		OK	195 PSI	918	20-1-25	
118	ACP-PFE-210	ARP	C/P Kitchen		✓		✓		OK	195 PSI	918	20-1-25	
119	ACP-PFE-211	ARP	C/P Kitchen		✓		✓		OK	195 PSI	918	20-1-25	
120	ACP-PFE-212	ARP	EE-Pakarang		✓		✓		OK	195 PSI	918	20-1-25	
121	ACP-PFE-213	ARP	H/K 2		✓		✓		OK	195 PSI	918	20-1-25	
122	ACP-PFE-214	ARP	Fire pump1		✓		✓		OK	195 PSI	918	20-1-25	



# Engineering Department

## FLS - 10 : Portable Fire Extinguishers

FLS 10-02 Record of monthly inspection of all Portable Fire Extinguishers.

Month: January Year: 2025

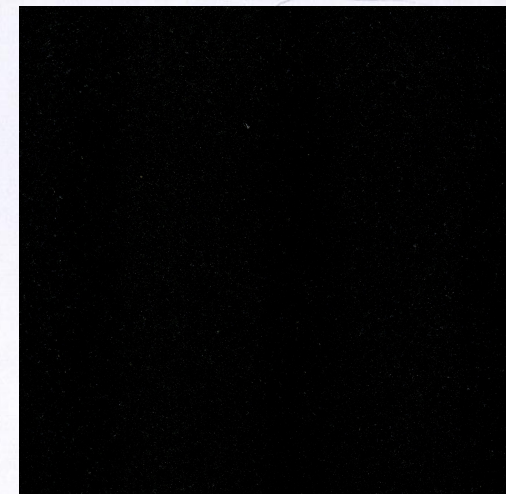
Item No.	FLS CODE	Area		Extinguisher (Dry chemical)							Checked by	Date	Remark
				Type of Chemical			Physical		Gauge				
		Section	Location	Dry	Halotron	Wet chemical	Normal	Abnormal	Status	Pressure			
123	ACP-PFE-215/	ARP	Fire pump2		/		/		ok	195 PSI	WJS	20/1/25	
124	ACP-PFE-216 /	ARP	Genarator2		/		/		OK	195 PSI	WJS	20/1/25	
125	ACP-PFE-217 /	ARP	MDB3		/		/		OK	195 PSI	WJS	25/1/25	
126	ACP-PFE-218 /	ARP	Staff toilet A7	/			/		ok	195 PSI	WJS	20/1/25	
127	ACP-PFE-219 /	ARP	Tranformer 4	/	/		/		ok	195 PSI	WJS	20/1/25	
128	ACP-PFE-220 /	ARP	Coral Kitchen		/		/		ok	195 PSI	WJS	20/1/25	
129	ACP-PFE-221 /	ARP	H/K1		/		/		OK	195 PSI	WJS	25/1/25	
130	ACP-PFE-222/	ARP	H/K3		/		/		OK	195 PSI	mb	25/1/25	
131	ACP-PFE-223 /	ARP	H/K4	/			/		ok	195 PSI	WJS	18/1/25	
132	ACP-PFE-224 /	ARP	Fire Pump3			/	/		OK	195 PSI	WJS	20/1/25	

Acknowledge by: WJS

Fire-Life Safety Teamleader

Approved by: .....

Heads of Department







## Engineering Department

### FLS - 10 : Portable Fire Extinguishers

10-02 Record of monthly inspection of all Portable Fire Extinguishers.

Month: February Year: 2025

Item no.	FLS CODE	Area		Fire Extinguisher							Checked by	Date	Remark
				Type of Chemical			Physical		Gauge				
		Section	Location	Dry	Halotron	Wet chemical	Normal	Abnormal	Status	Pressure			
1	ACP-PFE-001	Floor 1/1	1101		✓		✓		OK	195 PSI	NS	20-2-25	
2	ACP-PFE-002	Floor 1/2	1206		✓		✓		OK	195 PSI	NS	20-2-26	
3	ACP-PFE-003	Floor 2/1	2101		✓		✓		OK	195 PSI	NI	20-2-25	
4	ACP-PFE-004	Floor 2/2	2204		✓		✓		OK	195 PSI	NS	20-2-25	
5	ACP-PFE-005	Floor 3/1	3101		✓		✓		OK	195 PSI	NS	20-2-25	
6	ACP-PFE-006	Floor 3/2	3201		✓		✓		OK	195 PSI	NI	20-2-25	
7	ACP-PFE-007	Floor 4/1	4101		✓		✓		OK	195 PSI	NI	20-2-25	
8	ACP-PFE-008	Floor 4/2	4205		✓		✓		OK	195 PSI	NS	20-2-25	
9	ACP-PFE-009	Floor 4/3	4305		✓		✓		OK	195 PSI	NS	20-2-25	
10	ACP-PFE-010	Building4	EE Room		✓		✓		OK	195 PSI	NI	21-2-25	
11	ACP-PFE-011	Building5	5105		✓		✓		OK	195 PSI	NI	20-2-25	
12	ACP-PFE-012	Building5	5205		✓		✓		OK	195 PSI	NI	20-2-25	
13	ACP-PFE-013	Building5	5305		✓		✓		OK	195 PSI	NI	20-2-25	
14	ACP-PFE-014	Building7	Coridor B7FL1		✓		✓		OK	195 PSI	NI	20-2-25	
15	ACP-PFE-015	Building7	Store B7FL 2		✓		✓		OK	195 PSI	NI	20-2-25	
16	ACP-PFE-016	Building7	Store B7FL 3		✓		✓		OK	195 PSI	NS	20-2-25	
17	ACP-PFE-017	Building7	7107		✓		✓		OK	195 PSI	NI	20-2-25	
18	ACP-PFE-018	Building7	7123		✓		✓		OK	195 PSI	NS	20-2-25	
19	ACP-PFE-019	Building7	7207		✓		✓		OK	195 PSI	NI	20-2-25	
20	ACP-PFE-020	Building7	7223		✓		✓		OK	195 PSI	NI	20-2-25	
21	ACP-PFE-021	Building7	7307		✓		✓		OK	195 PSI	NI	20-2-25	
22	ACP-PFE-022	Building7	7323		✓		✓		OK	195 PSI	NI	20-2-25	
23	ACP-PFE-023	Lagritta	La Gritta Kitchen		✓		✓		OK	195 PSI	NI	21-2-25	
24	ACP-PFE-024	Lagritta	La Gritta Kitchen			✓	✓		OK	195 PSI	NI	21-2-25	
25	ACP-PFE-025	Lagritta Bar	La Gritta bar		✓		✓		OK	195 PSI	NI	20-2-25	
26	ACP-PFE-026	Main Store	Main Store		✓		✓		OK	195 PSI	NI	20-2-25	



Item no.	FLS CODE	Area		Fire Extinguisher							Checked by	Date	Remark
				Type of Chemical			Physical		Gauge				
		Section	Location	Dry	Halotron	Wet chemical	Normal	Abnormal	Status	Pressure			
27	ACP-PFE-027	Building 1	In Garden Room		/		/		OK	195PSI	nr	20-2-25	
28	ACP-PFE-028	Building 1	In Florist Room		/		/		OK	195PSI	nr	20-2-25	
29	ACP-PFE-029	Garbage	The Room		/		/		OK	195PSI	nr	20-2-25	
30	ACP-PFE-030	Garbage	The Room		/		/		OK	195PSI	nr	20-2-25	
31	ACP-PFE-031	Staff Canteer	In The Kitchen		/		/		OK	195PSI	nr	20-2-25	
32	ACP-PFE-032	Staff Canteer	In The Kitchen		/		/		OK	195PSI	nr	20-2-25	
33	ACP-PFE-033	Staff Canteer	In The Kitchen		/		/		OK	195PSI	nr	20-2-25	
34	ACP-PFE-034	Staff Canteer	Station Gas		/		/		OK	195PSI	nr	20-2-25	
35	ACP-PFE-035	Male Locker	In Staff Toilets		/		/		OK	195PSI	nr	20-2-25	
36	ACP-PFE-036	Female Locker	In Staff Toilets		/		/		OK	195PSI	nr	20-2-25	
37	ACP-PFE-037	HR. Room	In HR. Room		/		/		OK	195PSI	nr	20-2-25	
38	ACP-PFE-038	MDB3	Out HR. Room		/		/		OK	195PSI	nr	20-2-25	
39	ACP-PFE-039	Lagritta Pool	Lagritta Pool		/		/		OK	195PSI	nr	20-2-25	
40	ACP-PFE-040	Lobby	Entrance (OPR)		/		/		OK	195PSI	nr	20-2-25	
41	ACP-PFE-041	Store bell	In The Room		/		/		OK	195PSI	nr	20-2-25	
42	ACP-PFE-042	Executive Offices	Door Offices		/		/		OK	195PSI	nr	20-2-25	
43	ACP-PFE-043	Lagritta Station Gas	Lobby	/			/		OK	195PSI	nr	20-2-25	
44	ACP-PFE-044	Lagritta Station Gas	Lobby	/			/		OK	195PSI	nr	20-2-25	
45	ACP-PFE-045	Secueity No.1	Enteance	/	/		/		OK	195PSI	nr	21-2-25	
46	ACP-PFE-046	Secueity No.2	Lobby		/		/		OK	195PSI	nr	21-2-25	
47	ACP-PFE-047	Secueity No.3	Old Time Kepper		/		/		OK	195PSI	nr	21-2-25	
48	ACP-PFE-048	Accounting	In The Room		/		/		OK	195PSI	nr	20-2-25	
49	ACP-PFE-049	Main Kitchen	Entrance		/		/		OK	195PSI	nr	20-2-25	
50	ACP-PFE-050	Main Kitchen	Entrance		/		/		OK	195PSI	nr	20-2-25	
51	ACP-PFE-051	Main Kitchen	Out The Room		/	/	/		OK	195PSI	nr	21-2-25	
52	ACP-PFE-052	Main Kitchen	In The Room			/	/		OK	195PSI	nr	20-2-25	
53	ACP-PFE-053	House Keeping	In The Room		/		/		OK	195PSI	nr	20-2-25	
54	ACP-PFE-054	Generator MDB 1	Entrance		/		/		OK	195PSI	nr	21-2-25	
55	ACP-PFE-055	Generator MDB 1	In The Room		/		/		OK	195PSI	nr	21-2-25	
56	ACP-PFE-056	Laundry	Up The Stairs		/		/		OK	195PSI	nr	20-2-25	
57	ACP-PFE-057	Laundry	Laundry		/		/		OK	195PSI	nr	20-2-25	
58	ACP-PFE-058	Laundry	Laundry		/		/		OK	195PSI	nr	20-2-25	
59	ACP-PFE-059	Laundry	Laundry		/		/		OK	195PSI	nr	20-2-25	



Item no.	FLS CODE	Area		Fire Extinguisher							Checked by	Date	Remark
				Type of Chemical			Physical		Gauge				
		Section	Location	Dry	Halotron	Wet chemical	Normal	Abnormal	Status	Pressure			
60	ACP-PFE-060	Laundry	Laundry		/		/		OK	195 PSI	MR	20-2-25	
61	ACP-PFE-061	Boiler room	Boiler room		/		/		OK	195 PSI	MR	20-2-25	
62	ACP-PFE-062	Eng. Work Shop	Tools Room		/		/		OK	195 PSI	MR	20-2-25	
63	ACP-PFE-063	Eng. Work Shop	MDB Room		/		/		OK	195 PSI	MR	20-2-25	
64	ACP-PFE-064	Eng. Work Shop	Painter Room		/		/		OK	195 PSI	MR	21-2-25	
65	ACP-PFE-065	Oil Station	Desel Tank		/	/	/		OK	195 PSI	MR	21-2-25	
66	ACP-PFE-066	Walkway Rim talay			/		/		OK	195 PSI	MR	20-2-25	
67	ACP-PFE-067	Voyagerlounge			/		/		OK	195 PSI	MR	20-2-25	
68	ACP-PFE-068	Gas Station	Laundry		/		/		OK	195 PSI	MR	20-2-25	
69	ACP-PFE-069	Mortorbike Garage1			/		/		OK	195 PSI	MR	21-2-25	
70	ACP-PFE-070	Mortorbike Garage2			/		/		OK	195 PSI	MR	21-2-25	
71	ACP-PFE-071	Rimtalay pump room			/		/		OK	195 PSI	MR	20-2-25	
72	ACP-PFE-072	Kid club			/		/		OK	195 PSI	MR	20-2-25	
73	ACP-PFE-073	Fire Training			/		/		OK	195 PSI	MR	20-2-25	
74	ACP-PFE-074	PABX room			/		/		OK	195 PSI	MR	20-2-25	
75	ACP-PFE-075	EE room B.2			/		/		OK	195 PSI	MR	20-2-25	
76	ACP-PFE-076	Pantry samurt bar 1	Samut Bar		/		/		OK	195 PSI	MR	20-2-25	
77	ACP-PFE-077	Pantry samurt bar 2	Samut Bar		/		/		OK	195 PSI	MR	20-2-25	
78	ACP-PFE-078	Idea Station Gas	Idea Room		/		/		OK	195 PSI	MR	21-2-25	
79	ACP-PFE-079	Sport Center			/		/		OK	195 PSI	MR	21-2-25	
80	ACP-PFE-080	Sport Center			/		/		OK	195 PSI	MR	21-2-25	
81	ACP-PFE-081	Server Room			/		/		OK	195 PSI	MR	20-2-25	
82	ACP-PFE-082	SPA	Front Spa		/		/		OK	195 PSI	MR	21-2-25	
83	ACP-PFE-083		Spa Reception		/		/		OK	195 PSI	MR	21-2-25	
84	ACP-PFE-084		Spa Sala 1		/		/		OK	195 PSI	MR	21-2-25	
85	ACP-PFE-085		Spa Sala 2		/		/		OK	195 PSI	MR	21-2-25	
86	ACP-PFE-086		Spa Sala 3		/		/		OK	195 PSI	MR	21-2-25	
87	ACP-PFE-087		Spa Sala 4		/		/		OK	195 PSI	MR	21-2-25	
88	ACP-PFE-088	Fitness			/		/		OK	195 PSI	MR	20-2-25	



Item no.	FLS CODE	Area		Fire Extinguisher							Checked by	Date	Remark
				Type of Chemical			Physical		Gauge				
		Section	Location	Dry	Halotron	Wet chemical	Normal	Abnormal	Status	Pressure			
89	ACP-PFE-089	Lift			/		/		OK	195 psi	ms	20-2-25	
90	ACP-PFE-090	GM House			/		/		OK	195 psi	ms	21-2-25	
91	ACP-PFE-091	Jetty 1			/		/		OK	195 psi	ms	21-2-25	
92	ACP-PFE-092	Jetty 2			/		/		OK	195 psi	ms	21-2-25	
93	ACP-PFE-068/1	Gas Station	Laundry		/		/		OK	195 psi	ms	20-2-25	

Acknowledge by:

Fire-Life Safety T

Approved by: ....

Heads of Depart





## Engineering Department

### FLS - 10 : Portable Fire Extinguishers

FLS 10-02 Record of monthly inspection of all Portable Fire Extinguishers.

Month: February Year: 2025

Item No.	FLS CODE	Area		Extinguisher (Dry chemical)							Checked by	Date	Remark
				Type of Chemical			Physical		Gauge				
		Section	Location	Dry	Halotron	Wet chemical	Normal	Abnormal	Status	Pressure			
1	ACP-PFE-093	Ocean Wing 1	6000		/		/		OK	195 PSI	nr	18-2-25	
2	ACP-PFE-094		6002		/		/		OK	195 PSI	nr	18-2-25	
3	ACP-PFE-095		6004		/		/		OK	195 PSI	nr	18-2-25	
4	ACP-PFE-096	Ocean Wing 2	6006		/		/		OK	195 PSI	nr	18-2-26	
5	ACP-PFE-097		6008		/		/		OK	195 PSI	nr	18-2-25	
6	ACP-PFE-098		6010		/		/		OK	195 PSI	nr	18-2-26	
7	ACP-PFE-099	Ocean Wing 3	6012		/		/		OK	195 PSI	nr	18-2-26	
8	ACP-PFE-100		6015		/		/		OK	195 PSI	nr	18-2-25	
9	ACP-PFE-101		6016		/		/		OK	195 PSI	nr	18-2-26	
10	ACP-PFE-102	Ocean Wing 4	6017		/		/		OK	195 PSI	nr	18-2-26	
11	ACP-PFE-103		6020		/		/		OK	195 PSI	nr	18-2-26	
12	ACP-PFE-104	Ocean Wing 5	6021		/		/		OK	195 PSI	nr	18-2-26	
13	ACP-PFE-105		6023		/		/		OK	195 PSI	nr	18-2-25	
14	ACP-PFE-106	Ocean Wing 6	6024		/		/		OK	195 PSI	nr	18-2-26	
15	ACP-PFE-107		6026		/		/		OK	195 PSI	nr	18-2-26	
16	ACP-PFE-108	Ocean Wing 7	6028		/		/		OK	195 PSI	nr	18-2-25	
17	ACP-PFE-109		6031		/		/		OK	195 PSI	nr	18-2-26	
18	ACP-PFE-110	Ocean Wing 8	6032		/		/		OK	195 PSI	nr	18-2-26	
19	ACP-PFE-111		6035		/		/		OK	195 PSI	nr	18-2-25	
20	ACP-PFE-112	Ocean Wing 9	6036		/		/		OK	195 PSI	nr	18-2-26	
21	ACP-PFE-113		6038		/		/		OK	195 PSI	nr	18-2-26	
22	ACP-PFE-114		6040		/		/		OK	195 PSI	nr	18-2-25	
23	ACP-PFE-0115	Ocean Wing 10	6042		/		/		OK	195 PSI	nr	18-2-26	
24	ACP-PFE-0116		6044		/		/		OK	195 PSI	nr	18-2-26	





## Engineering Department

### FLS - 10 : Portable Fire Extinguishers

FLS 10-02 Record of monthly inspection of all Portable Fire Extinguishers.

Month: February Year: 2025

Item No.	FLS CODE	Area		Extinguisher (Dry chemical)							Checked by	Date	Remark
				Type of Chemical			Physical		Gauge				
		Section	Location	Dry	Halotron	Wet chemical	Normal	Abnormal	Status	Pressure			
25	ACP-PFE-0117	Ocean Wing 11	6046		/		/		OK	195 PSI	NI	18-2-25	
26	ACP-PFE-0118		6048		/		/		OK	195 PSI	NI	18-2-25	
27	ACP-PFE-0119		6050		/		/		OK	195 PSI	NI	18-2-25	
28	ACP-PFE-0120		6052		/		/		OK	195 PSI	NI	18-2-25	
29	ACP-PFE-0121	Ocean Wing 12	6053		/		/		OK	195 PSI	NI	18-2-25	
30	ACP-PFE-0122		6055		/		/		OK	195 PSI	NI	18-2-25	
31	ACP-PFE-0123		6057		/		/		OK	195 PSI	NI	18-2-25	
32	ACP-PFE-0124	Ocean Wing 13	6058		/		/		OK	195 PSI	NI	18-2-25	
33	ACP-PFE-0125		6060		/		/		OK	195 PSI	NI	18-2-25	
34	ACP-PFE-0126		6062		/		/		OK	195 PSI	NI	18-2-25	
35	ACP-PFE-0127	Ocean Wing 14	6063		/		/		OK	195 PSI	NI	18-2-25	
36	ACP-PFE-0128		6066	/			/		OK	195 PSI	NI	18-2-25	
37	ACP-PFE-0129	Ocean Wing 15	6067		/		/		OK	195 PSI	NI	18-2-25	
38	ACP-PFE-0130		6069		/		/		OK	195 PSI	NI	18-2-25	
39	ACP-PFE-0131	Ocean Wing 16	6071		/		/		OK	195 PSI	NI	18-2-25	
40	ACP-PFE-0132		6073		/		/		OK	195 PSI	NI	18-2-25	
41	ACP-PFE-0133	Ocean Wing 17	6075		/		/		OK	195 PSI	NI	18-2-25	
42	ACP-PFE-0134		6077		/		/		OK	195 PSI	NI	18-2-25	
43	ACP-PFE-0135	Ocean Wing 18	6079		/		/		OK	195 PSI	NI	18-2-25	
44	ACP-PFE-0136		6081		/		/		OK	195 PSI	NI	18-2-25	
45	ACP-PFE-0137	Ocean Wing 19	6083		/		/		OK	195 PSI	NI	18-2-25	
46	ACP-PFE-0138		6085		/		/		OK	195 PSI	NI	18-2-25	
47	ACP-PFE-0139		6086		/		/		OK	195 PSI	NI	18-2-25	
48	ACP-PFE-0140	Ocean Wing 20	6087		/		/		OK	195 PSI	NI	18-2-25	
49	ACP-PFE-0141		6089		/		/		OK	195 PSI	NI	18-2-25	





# Engineering Department

## FLS - 10 : Portable Fire Extinguishers

FLS 10-02 Record of monthly inspection of all Portable Fire Extinguishers.

Month: February Year: 2015

Item No.	FLS CODE	Area		Extinguisher (Dry chemical)							Checked by	Date	Remark
				Type of Chemical			Physical		Gauge				
		Section	Location	Dry	Halotron	Wet chemical	Normal	Abnormal	Status	Pressure			
50	ACP-PFE-0142		6090		/		/		OK	195 PSI	NI	18-2-25	
51	ACP-PFE-143	Ocean Wing 21	6091		/		/		OK	195 PSI	NI	18-2-25	
52	ACP-PFE-144		6093		/		/		OK	195 PSI	NI	18-2-25	
53	ACP-PFE-145		6096		/		/		OK	195 PSI	NI	18-2-25	
54	ACP-PFE-146	Ocean Wing 22	6097		/		/		OK	195 PSI	NI	18-2-25	
55	ACP-PFE-147		6099		/		/		OK	195 PSI	NI	18-2-25	
56	ACP-PFE-148		6101		/		/		OK	195 PSI	NI	18-2-25	
57	ACP-PFE-149	Ocean Wing 23	6103		/		/		OK	195 PSI	NI	18-2-25	
58	ACP-PFE-150		6105		/		/		OK	195 PSI	NI	18-2-25	
59	ACP-PFE-151		6107		/		/		OK	195 PSI	NI	18-2-25	
60	ACP-PFE-152	Ocean Wing 24	6109		/		/		OK	195 PSI	NI	18-2-25	
61	ACP-PFE-153		6112		/		/		OK	195 PSI	NI	18-2-25	
62	ACP-PFE-154	Ocean Wing 25	6114		/		/		OK	195 PSI	NI	18-2-25	
63	ACP-PFE-155		6116		/		/		OK	195 PSI	NI	18-2-25	
64	ACP-PFE-156	Ocean Wing 26	6118		/		/		OK	195 PSI	NI	18-2-25	
65	ACP-PFE-157		6120		/		/		OK	195 PSI	NI	18-2-25	
66	ACP-PFE-158	Ocean Wing 27	6121		/		/		OK	195 PSI	NI	18-2-25	
67	ACP-PFE-159		6123		/		/		OK	195 PSI	NI	18-2-25	
68	ACP-PFE-160	Ocean Wing 28	6124		/		/		OK	195 PSI	NI	18-2-25	
69	ACP-PFE-161		6126		/		/		OK	195 PSI	NI	18-2-25	
70	ACP-PFE-162	Ocean Wing 29	6127	/			/		OK	195 PSI	NI	18-2-25	
71	ACP-PFE-163		6128		/		/		OK	195 PSI	NI	18-2-25	
72	ACP-PFE-164	Ocean Wing 30	6129		/		/		OK	195 PSI	NI	18-2-25	
73	ACP-PFE-165		6130		/		/		OK	195 PSI	NI	18-2-25	





## Engineering Department

### FLS - 10 : Portable Fire Extinguishers

FLS 10-02 Record of monthly inspection of all Portable Fire Extinguishers.

Month: February..... Year: 2025.....

Item No.	FLS CODE	Area		Extinguisher (Dry chemical)						Checked by	Date	Remark	
				Type of Chemical			Physical		Gauge				
		Section	Location	Dry	Halotron	Wet chemical	Normal	Abnormal	Status				Pressure
74	ACP-PFE-166	Ocean Wing 31	6131		/		✓		OK	195 PSI	NR	18-2-25	
75	ACP-PFE-167		6132		/		✓		OK	195 PSI	NR	18-2-25	
76	ACP-PFE-168	Ocean Wing 32	6133		/		✓		OK	195 PSI	NR	18-2-25	
77	ACP-PFE-169		6134		/		✓		OK	195 PSI	NR	18-2-25	
78	ACP-PFE-170	Ocean Wing 33	6135				✓		OK	195 PSI	NR	18-2-25	
79	ACP-PFE-171		6136		/		✓		OK	195 PSI	NR	18-2-25	
80	ACP-PFE-172	Ocean Wing 34	6137		/		✓		OK	195 PSI	NR	18-2-25	
81	ACP-PFE-173		6138		/		✓		OK	195 PSI	NR	18-2-25	
82	ACP-PFE-174	Ocean Wing 35	6139		/		✓		OK	195 PSI	NR	18-2-25	
83	ACP-PFE-175		6141		/		✓		OK	195 PSI	NR	18-2-25	
84	ACP-PFE-176	Ocean Wing 36	6142		/		✓		OK	195 PSI	NR	18-2-25	
85	ACP-PFE-177		6144		/		✓		OK	195 PSI	NR	18-2-25	
86	ACP-PFE-178	Ocean Wing 37	6145	/			✓		OK	195 PSI	NR	18-2-25	
87	ACP-PFE-179		6147		/		✓		OK	195 PSI	NR	18-2-25	
88	ACP-PFE-180	Ocean Wing 38	6148	/			✓		OK	195 PSI	NR	18-2-25	
89	ACP-PFE-181		6149		/		✓		OK	195 PSI	NR	18-2-25	
90	ACP-PFE-182	Ocean Wing 39	6200	/			✓		OK	195 PSI	NR	18-2-25	
91	ACP-PFE-183		6202	/			✓		OK	195 PSI	NR	18-2-25	
92	ACP-PFE-184	Ocean Wing 40	6203		/		✓		OK	195 PSI	NR	18-2-25	
93	ACP-PFE-185		6205	/			✓		OK	195 PSI	NR	18-2-25	
94	ACP-PFE-186	Ocean Wing 41	6206	/			✓		OK	195 PSI	NR	18-2-25	
95	ACP-PFE-187		6208	/			✓		OK	195 PSI	NR	18-2-25	
96	ACP-PFE-188	Ocean Wing 42	6209	/			✓		OK	195 PSI	NR	18-2-25	
97	ACP-PFE-189		6211	/			✓		OK	195 PSI	NR	18-2-25	





# Engineering Department

## FLS - 10 : Portable Fire Extinguishers

FLS 10-02 Record of monthly inspection of all Portable Fire Extinguishers.

Month: February Year: 2025

Item No.	FLS CODE	Area		Extinguisher (Dry chemical)							Checked by	Date	Remark
				Type of Chemical			Physical		Gauge				
		Section	Location	Dry	Halotron	Wet chemical	Normal	Abnormal	Status	Pressure			
98	ACP-PFE-190	Ocean Wing 43	6212	/			✓		OK	195 PSI	18-2-25		
99	ACP-PFE-191		6215		/		✓		OK	195 PSI	18-2-25		
100	ACP-PFE-192	Ocean Wing 44	6216	/			✓		OK	195 PSI	18-2-25		
101	ACP-PFE-193		6218	/			✓		OK	195 PSI	18-2-25		
102	ACP-PFE-194	Ocean Wing 45	6219		/		✓		OK	195 PSI	18-2-25		
103	ACP-PFE-195		6221	/			✓		OK	195 PSI	18-2-25		
104	ACP-PFE-196	Ocean Wing 46	6222		/		✓		OK	195 PSI	18-2-25		
105	ACP-PFE-197		6224		/		✓		OK	195 PSI	18-2-25		
106	ACP-PFE-198	Ocean Wing 47	6225	/			✓		OK	195 PSI	18-2-25		
107	ACP-PFE-199		6227		/		✓		OK	195 PSI	18-2-25		
108	ACP-PFE-200	Ocean Wing 48	6228		/		✓		OK	195 PSI	18-2-25		
109	ACP-PFE-201		6230	/			✓		OK	195 PSI	18-2-25		
110	ACP-PFE-202	Ocean Wing 49	6231	/			✓		OK	195 PSI	18-2-25		
111	ACP-PFE-203		6233	/			✓		OK	195 PSI	18-2-25		
112	ACP-PFE-204	Ocean Wing 50	6234	/			✓		OK	195 PSI	18-2-25		
113	ACP-PFE-205		6236	/			✓		OK	195 PSI	18-2-25		
114	ACP-PFE-206	ARP	Club Pakarang		/		✓		OK	195 PSI	18-2-25		
115	ACP-PFE-207	ARP	MDB 4		/		✓		OK	195 PSI	18-2-25		
116	ACP-PFE-208	ARP	Club Pakarang 1				✓		OK	195 PSI	18-2-25		
117	ACP-PFE-209	ARP	Club Pakarang 2				✓		OK	195 PSI	18-2-25		
118	ACP-PFE-210	ARP	C/P Kitchen		/		✓		OK	195 PSI	18-2-25		
119	ACP-PFE-211	ARP	C/P Kitchen		/		✓		OK	195 PSI	18-2-25		
120	ACP-PFE-212	ARP	EE-Pakarang		/		✓		OK	195 PSI	18-2-25		
121	ACP-PFE-213	ARP	H/K 2		/		✓		OK	195 PSI	18-2-25		
122	ACP-PFE-214	ARP	Fire pump1		/		✓		OK	195 PSI	18-2-25		





# Engineering Department

## FLS - 10 : Portable Fire Extinguishers

FLS 10-02 Record of monthly inspection of all Portable Fire Extinguishers.

Month: February Year: 2025

Item No.	FLS CODE	Area		Extinguisher (Dry chemical)						Checked by	Date	Remark	
				Type of Chemical			Physical		Gauge				
		Section	Location	Dry	Halotron	Wet chemical	Normal	Abnormal	Status				Pressure
123	ACP-PFE-215	ARP	Fire pump2		/		✓		OK	195 PSI	MR	18-2-25	
124	ACP-PFE-216	ARP	Genarator2		/		✓		OK	195 PSI	MR	18-2-25	
125	ACP-PFE-217	ARP	MDB3		/		✓		OK	195 PSI	MR	18-2-25	
126	ACP-PFE-218	ARP	Staff toilet A7	/			✓		OK	195 PSI	MR	18-2-25	
127	ACP-PFE-219	ARP	Tranformer 4	/			✓		OK	195 PSI	MR	18-2-25	
128	ACP-PFE-220	ARP	Coral Kitchen		/		✓		OK	195 PSI	MR	18-2-25	
129	ACP-PFE-221	ARP	H/K1		/		✓		OK	195 PSI	MR	18-2-25	
130	ACP-PFE-222	ARP	H/K3		/		✓		OK	195 PSI	MR	18-2-25	
131	ACP-PFE-223	ARP	H/K4	/	/		✓		OK	195 PSI	MR	18-2-25	
132	ACP-PFE-224	ARP	Fire Pump3			/	✓		OK	195 PSI	MR	18-2-25	

Acknowledge by: นายณัฐ

Fire-Life Safety Teamleader

Approved by: .....

Heads of Department





# Engineering Department

## FLS - 10 : Portable Fire Extinguishers

10-02 Record of monthly inspection of all Portable Fire Extinguishers.

Month: March Year: 2025

Item no.	FLS CODE	Area		Fire Extinguisher							Checked by	Date	Remark
				Type of Chemical			Physical		Gauge				
		Section	Location	Dry	Halotron	Wet chemical	Normal	Abnormal	Status	Pressure			
1	ACP-PFE-001	Floor 1/1	1101		✓		✓		✓	195 PSI	nr	21-3-25	
2	ACP-PFE-002	Floor 1/2	1206		✓		✓		✓	195 PSI	nr	21-3-25	
3	ACP-PFE-003	Floor 2/1	2101		✓		✓		✓	195 PSI	nr	21-3-25	
4	ACP-PFE-004	Floor 2/2	2204		✓		✓		✓	195 PSI	nr	21-3-25	
5	ACP-PFE-005	Floor 3/1	3101		✓		✓		✓	195 PSI	nr	21-3-25	
6	ACP-PFE-006	Floor 3/2	3201		✓		✓		✓	195 PSI	nr	21-3-25	
7	ACP-PFE-007	Floor 4/1	4101		✓		✓		✓	195 PSI	nr	21-3-25	
8	ACP-PFE-008	Floor 4/2	4205		✓		✓		✓	195 PSI	nr	21-3-25	
9	ACP-PFE-009	Floor 4/3	4305		✓		✓		✓	195 PSI	nr	21-3-25	
10	ACP-PFE-010	Building4	EE Room		✓		✓		✓	195 PSI	nr	21-3-25	
11	ACP-PFE-011	Building5	5105		✓		✓		✓	195 PSI	nr	21-3-25	
12	ACP-PFE-012	Building5	5205		✓		✓		✓	195 PSI	nr	21-3-25	
13	ACP-PFE-013	Building5	5305		✓		✓		✓	195 PSI	nr	21-3-25	
14	ACP-PFE-014	Building7	Coridor B7FL1		✓				✓	195 PSI	mb	19/3/25	
15	ACP-PFE-015	Building7	Store B7FL 2		✓				✓	195 PSI	mb	19/3/25	
16	ACP-PFE-016	Building7	Store B7FL 3		✓				✓	195 PSI	mb	19/3/25	
17	ACP-PFE-017	Building7	7107		✓				✓	195 PSI	mb	19/3/25	
18	ACP-PFE-018	Building7	7123		✓				✓	195 PSI	mb	19/3/25	
19	ACP-PFE-019	Building7	7207		✓				✓	195 PSI	mb	19/3/25	
20	ACP-PFE-020	Building7	7223		✓				✓	195 PSI	mb	19/3/25	
21	ACP-PFE-021	Building7	7307		✓				✓	195 PSI	mb	19/3/25	
22	ACP-PFE-022	Building7	7323		✓				✓	195 PSI	mb	19/3/25	
23	ACP-PFE-023	Lagritta	La Gritta Kitchen			✓	✓		✓	195 PSI	nr	31-3-25	
24	ACP-PFE-024	Lagritta	La Gritta Kitchen		✓		✓		✓	195 PSI	nr	31-3-25	
25	ACP-PFE-025	Lagritta Bar	La Gritta bar		✓		✓		✓	195 PSI	nr	31-3-25	
26	ACP-PFE-026	Main Store	Main Store		✓		✓		✓	195 PSI	nr	31-3-25	



Item no.	FLS CODE	Area		Fire Extinguisher							Checked by	Date	Remark
				Type of Chemical			Physical		Gauge				
		Section	Location	Dry	Halotron	Wet chemical	Normal	Abnormal	Status	Pressure			
27	ACP-PFE-027	Building 1	In Garden Room		✓		✓		✓	195 PSI	nr	21-3-25	150
28	ACP-PFE-028	Building 1	In Florist Room		✓		✓		✓	195 PSI	nr	21-3-25	
29	ACP-PFE-029	Garbage	The Room		✓		✓		✓	195 PSI	nr	17-3-25	
30	ACP-PFE-030	Garbage	The Room		✓		✓		✓	195 PSI	nr	17-3-25	
31	ACP-PFE-031	Staff Canteer	In The Kitchen		✓		✓		✓	195 PSI	nr	31-3-25	
32	ACP-PFE-032	Staff Canteer	In The Kitchen		✓		✓		✓	195 PSI	nr	31-3-25	
33	ACP-PFE-033	Staff Canteer	In The Kitchen		✓	✓	✓		✓	195 PSI	nr	31-3-25	
34	ACP-PFE-034	Staff Canteer	Station Gas		✓		✓		✓	195 PSI	nr	31-3-25	
35	ACP-PFE-035	Male Locker	In Staff Toilets		✓		✓		✓	195 PSI	mb	17-3-25	
36	ACP-PFE-036	Female Locker	In Staff Toilets		✓		✓		✓	195 PSI	nr	31-3-25	
37	ACP-PFE-037	HR. Room	In HR. Room		✓		✓		✓	195 PSI	nr	4-3-25	
38	ACP-PFE-038	MDB3	Out HR. Room		✓		✓		✓	195 PSI	nr	4-3-25	
39	ACP-PFE-039	Lagritta Pool	Lagritta Pool		✓		✓		✓	195 PSI	nr	4-3-25	100
40	ACP-PFE-040	Lobby	Entrance (OPR)		✓		✓		✓	195 PSI	nr	21-3-25	
41	ACP-PFE-041	Store bell	In The Room		✓		✓		✓	195 PSI	nr	21-3-25	
42	ACP-PFE-042	Executive Offices	Door Offices		✓		✓		✓	195 PSI	nr	21-3-25	
43	ACP-PFE-043	Lagritta Station Gas	Lobby	✓			✓		✓	195 PSI	nr	21-3-25	
44	ACP-PFE-044	Lagritta Station Gas	Lobby	✓			✓		✓	195 PSI	nr	21-3-25	
45	ACP-PFE-045	Secueity No.1	Enteance	✓			✓		✓	195 PSI	nr	21-3-25	
46	ACP-PFE-046	Secueity No.2	Lobby	✓	✓		✓		✓	195 PSI	nr	21-3-25	
47	ACP-PFE-047	Secueity No.3	Old Time Kepper		✓		✓		✓	195 PSI	nr	31-3-25	
48	ACP-PFE-048	Accounting	In The Room		✓		✓		✓	195 PSI	nr	21-3-25	
49	ACP-PFE-049	Main Kitchen	Entrance		✓		✓		✓	195 PSI	nr	31-3-25	
50	ACP-PFE-050	Main Kitchen	Entrance		✓		✓		✓	195 PSI	nr	31-3-25	
51	ACP-PFE-051	Main Kitchen	Out The Room			✓	✓		✓	195 PSI	nr	31-3-25	
52	ACP-PFE-052	Main Kitchen	In The Room			✓	✓		✓	195 PSI	nr	31-3-25	
53	ACP-PFE-053	House Keeping	In The Room		✓		✓		✓	195 PSI	nr	21-3-25	
54	ACP-PFE-054	Generator MDB 1	Entrance		✓ mb	✓	✓		✓	195 PSI	nr	31-3-25	
55	ACP-PFE-055	Generator MDB 1	In The Room		✓		✓		✓	195 PSI	nr	31-3-25	
56	ACP-PFE-056	Laundry	Up The Stairs		✓		✓		✓	195 PSI	nr	17-3-25	
57	ACP-PFE-057	Laundry	Laundry		✓		✓		✓	195 PSI	nr	17-3-25	
58	ACP-PFE-058	Laundry	Laundry		✓		✓		✓	195 PSI	nr	31-3-25	
59	ACP-PFE-059	Laundry	Laundry		✓		✓		✓	195 PSI	nr	31-3-25	



Item no.	FLS CODE	Area		Fire Extinguisher							Checked by	Date	Remark	
				Type of Chemical			Physical		Gauge					
		Section	Location	Dry	Halotron	Wet chemical	Normal	Abnormal	Status	Pressure				
60	ACP-PFE-060	Laundry	Laundry		✓		✓		✓	195 PSI	WS	31-3-25		
61	ACP-PFE-061	Boiler room	Boiler room		✓		✓		✓	195 PSI	WS	31-3-25		
62	ACP-PFE-062	Eng. Work Shop	Tools Room		✓		✓		✓	195 PSI	WS	31-3-25		
63	ACP-PFE-063	Eng. Work Shop	MDB Room		✓		✓		✓	195 PSI	WS	31-3-25		
64	ACP-PFE-064	Eng. Work Shop	Painter Room		✓		✓		✓	195 PSI	WS	28-3-25		
65	ACP-PFE-065	Oil Station	Desel Tank			✓	✓		✓	195 PSI	WS	31-3-25		
66	ACP-PFE-066	Walkway Rim talay			✓		✓		✓	195 PSI	WS	21-3-25		
67	ACP-PFE-067	Voyagerlounge			✓		✓		✓	195 PSI	WS			
68	ACP-PFE-068	Gas Station	Laundry		✓		✓		✓	195 PSI	WS	12-3-25		
69	ACP-PFE-069	Mortorbike Garage1			✓		✓		✓	195 PSI	WS	31-3-25		
70	ACP-PFE-070	Mortorbike Garage2			✓		✓		✓	195 PSI	WS	31-3-25		
71	ACP-PFE-071	Rimtalay pump room			✓		✓		✓	195 PSI	MS	19/3/25		
72	ACP-PFE-072	Kid club			✓		✓		✓	195 PSI	WS	11-3-25		
73	ACP-PFE-073	Fire Training			✓		✓		✓	195 PSI	WS	21-3-25		
74	ACP-PFE-074	PABX room			✓		✓		✓	195 PSI	WS	21-3-25		
75	ACP-PFE-075	EE room B.2			✓		✓		✓	195 PSI	WS	21-3-25		
76	ACP-PFE-076	Pantry samurt bar 1	Samut Bar		✓		✓		✓	195 PSI	WS	21-3-25		
77	ACP-PFE-077	Pantry samurt bar 2	Samut Bar		✓		✓		✓	195 PSI	WS	21-3-25		
78	ACP-PFE-078	Idea Station Gas	Idea Room											
79	ACP-PFE-079	Sport Center			✓		✓		✓	195 PSI	WS	31-3-25		
80	ACP-PFE-080	Sport Center			✓		✓		✓	195 PSI	WS	31-3-25		
81	ACP-PFE-081	Server Room			✓		✓		✓	195 PSI	WS	21-3-25		
82	ACP-PFE-082	SPA	Front Spa		✓						MS	19/3/25		
83	ACP-PFE-083		Spa Reception		✓							MS	19/3/25	
84	ACP-PFE-084		Spa Sala 1		✓							MS	19/3/25	
85	ACP-PFE-085		Spa Sala 2		✓							MS	19/3/25	
86	ACP-PFE-086		Spa Sala 3		✓							MS	19/3/25	
87	ACP-PFE-087		Spa Sala 4		✓							MS	19/3/25	
88	ACP-PFE-088	Fitness			✓		✓		✓	195 PSI	WS	21-3-25		



Item no.	FLS CODE	Area		Fire Extinguisher							Checked by	Date	Remark
				Type of Chemical			Physical		Gauge				
		Section	Location	Dry	Halotron	Wet chemical	Normal	Abnormal	Status	Pressure			
89	ACP-PFE-089	Lift			✓		✓		✓	195 PSI	nr	21-3-25	
90	ACP-PFE-090	GM House			✓		✓		✓	195 PSI	nr	31-3-25	
91	ACP-PFE-091	Jetty 1			✓		✓		✓	195 PSI	nr	31-3-25	
92	ACP-PFE-092	Jetty 2			✓		✓		✓	195 PSI	nr	31-3-25	
93	ACP-PFE-093	Gas Station	Laundry										

Acknowledge by: SVS  
PLS 77M

Fire-Life Safety Teamleader

Approved by: ..

Heads of Depart



# Engineering Department

## FLS - 10 : Portable Fire Extinguishers

FLS 10-02 Record of monthly inspection of all Portable Fire Extinguishers.

Month: March Year: 2025

Item No.	FLS CODE	Area		Extinguisher (Dry chemical)							Checked by	Date	Remark
				Type of Chemical			Physical		Gauge				
		Section	Location	Dry	Halotron	Wet chemical	Normal	Abnormal	Status	Pressure			
1	ACP-PFE-093	Ocean Wing 1	6000		✓		✓		✓	195 PSI	NS	31-3-25	
2	ACP-PFE-094		6002		✓		✓		✓	195 PSI	NS	31-3-25	
3	ACP-PFE-095		6004		✓		✓		✓	195 PSI	NS	31-3-25	
4	ACP-PFE-096	Ocean Wing 2	6006		✓		✓		✓	195 PSI	NS	31-3-25	
5	ACP-PFE-097		6008		✓		✓		✓	195 PSI	NS	31-3-25	
6	ACP-PFE-098		6010		✓		✓		✓	195 PSI	NS	31-3-25	
7	ACP-PFE-099	Ocean Wing 3	6012		✓		✓		✓	195 PSI	NS	31-3-25	
8	ACP-PFE-100		6015		✓		✓		✓	195 PSI	NS	31-3-25	
9	ACP-PFE-101		6016		✓		✓		✓	195 PSI	NS	31-3-25	
10	ACP-PFE-102	Ocean Wing 4	6017		✓		✓		✓	195 PSI	NS	31-3-25	
11	ACP-PFE-103		6020		✓		✓		✓	195 PSI	NS	31-3-25	
12	ACP-PFE-104	Ocean Wing 5	6021		✓		✓		✓	195 PSI	NS	31-3-25	
13	ACP-PFE-105		6023		✓		✓		✓	195 PSI	NS	31-3-25	
14	ACP-PFE-106	Ocean Wing 6	6024		✓		✓		✓	195 PSI	NS	31-3-25	
15	ACP-PFE-107		6026		✓		✓		✓	195 PSI	NS	31-3-25	
16	ACP-PFE-108	Ocean Wing 7	6028		✓		✓		✓	195 PSI	NS	31-3-25	
17	ACP-PFE-109		6031		✓		✓		✓	195 PSI	NS	31-3-25	
18	ACP-PFE-110	Ocean Wing 8	6032		✓		✓		✓	195 PSI	NS	31-3-25	
19	ACP-PFE-111		6035		✓		✓		✓	195 PSI	NS	31-3-25	
20	ACP-PFE-112	Ocean Wing 9	6036		✓		✓		✓	195 PSI	NS	31-3-25	
21	ACP-PFE-113		6038		✓		✓		✓	195 PSI	NS	31-3-25	
22	ACP-PFE-114		6040		✓		✓		✓	195 PSI	NS	31-3-25	
23	ACP-PFE-0115	Ocean Wing 10	6042		✓		✓		✓	195 PSI	NS	31-3-25	
24	ACP-PFE-0116		6044		✓		✓		✓	195 PSI	NS	31-3-25	



# Engineering Department

## FLS - 10 : Portable Fire Extinguishers

FLS 10-02 Record of monthly inspection of all Portable Fire Extinguishers.

Month: March Year: 2025

Item No.	FLS CODE	Area		Extinguisher (Dry chemical)							Checked by	Date	Remark
				Type of Chemical			Physical		Gauge				
		Section	Location	Dry	Halotron	Wet chemical	Normal	Abnormal	Status	Pressure			
25	ACP-PFE-0117	Ocean Wing 11	6046		✓		✓		✓	195 PSI	MS	31-3-25	
26	ACP-PFE-0118		6048		✓		✓		✓	195 PSI	MS	31-3-25	
27	ACP-PFE-0119		6050		✓		✓		✓	195 PSI	MS	31-3-25	
28	ACP-PFE-0120		6052		✓		✓		✓	195 PSI	MS	31-3-25	
29	ACP-PFE-0121	Ocean Wing 12	6053		✓		✓		✓	195 PSI	MS	31-3-25	
30	ACP-PFE-0122		6055		✓		✓		✓	195 PSI	MS	31-3-25	
31	ACP-PFE-0123		6057		✓		✓		✓	195 PSI	MS	31-3-25	
32	ACP-PFE-0124	Ocean Wing 13	6058		✓		✓		✓	195 PSI	MS	31-3-25	
33	ACP-PFE-0125		6060		✓		✓		✓	195 PSI	MS	31-3-25	
34	ACP-PFE-0126		6062		✓		✓		✓	195 PSI	MS	31-3-25	
35	ACP-PFE-0127	Ocean Wing 14	6063		✓		✓		✓	195 PSI	MS	31-3-25	
36	ACP-PFE-0128		6066	✓	✓		✓		✓	195 PSI	MS	31-3-25	***
37	ACP-PFE-0129	Ocean Wing 15	6067		✓		✓		✓	195 PSI	MS	31-3-25	
38	ACP-PFE-0130		6069		✓		✓		✓	195 PSI	MS	31-3-25	
39	ACP-PFE-0131	Ocean Wing 16	6071		✓		✓		✓	195 PSI	MS	31-3-25	
40	ACP-PFE-0132		6073		✓		✓		✓	195 PSI	MS	31-3-25	
41	ACP-PFE-0133	Ocean Wing 17	6075		✓		✓		✓	195 PSI	MS	31-3-25	
42	ACP-PFE-0134		6077		✓		✓		✓	195 PSI	MS	31-3-25	
43	ACP-PFE-0135	Ocean Wing 18	6079		✓		✓		✓	195 PSI	MS	31-3-25	
44	ACP-PFE-0136		6081		✓		✓		✓	195 PSI	MS	31-3-25	
45	ACP-PFE-0137	Ocean Wing 19	6083		✓		✓		✓	195 PSI	MS	31-3-25	
46	ACP-PFE-0138		6085		✓		✓		✓	195 PSI	MS	31-3-25	
47	ACP-PFE-0139		6086		✓		✓		✓	195 PSI	MS	31-3-25	
48	ACP-PFE-0140	Ocean Wing 20	6087		✓		✓		✓	195 PSI	MS	31-3-25	
49	ACP-PFE-0141		6089		✓		✓		✓	195 PSI	MS	31-3-25	



# Engineering Department

## FLS - 10 : Portable Fire Extinguishers

FLS 10-02 Record of monthly inspection of all Portable Fire Extinguishers.

Month: March Year: 2025

Item No.	FLS CODE	Area		Extinguisher (Dry chemical)							Checked by	Date	Remark
				Type of Chemical			Physical		Gauge				
		Section	Location	Dry	Halotron	Wet chemical	Normal	Abnormal	Status	Pressure			
50	ACP-PFE-0142		6090		✓		✓		✓	195 PSI	NS	31-3-25	
51	ACP-PFE-143	Ocean Wing 21	6091		✓		✓		✓	195 PSI	NS	31-3-25	
52	ACP-PFE-144		6093		✓		✓		✓	195 PSI	NS	31-3-25	
53	ACP-PFE-145		6096		✓		✓		✓	195 PSI	NS	31-3-25	
54	ACP-PFE-146	Ocean Wing 22	6097		✓		✓		✓	195 PSI	NS	31-3-25	
55	ACP-PFE-147		6099		✓		✓		✓	195 PSI	NS	31-3-25	
56	ACP-PFE-148		6101		✓		✓		✓	195 PSI	NS	31-3-25	
57	ACP-PFE-149	Ocean Wing 23	6103		✓		✓		✓	195 PSI	NS	31-3-25	
58	ACP-PFE-150		6105		✓		✓		✓	195 PSI	NS	31-3-25	
59	ACP-PFE-151		6107		✓		✓		✓	195 PSI	NS	31-3-25	
60	ACP-PFE-152	Ocean Wing 24	6109		✓		✓		✓	195 PSI	NS	31-3-25	
61	ACP-PFE-153		6112		✓		✓		✓	195 PSI	NS	31-3-25	
62	ACP-PFE-154	Ocean Wing 25	6114		✓		✓		✓	195 PSI	NS	31-3-25	
63	ACP-PFE-155		6116		✓		✓		✓	195 PSI	NS	31-3-25	
64	ACP-PFE-156	Ocean Wing 26	6118		✓		✓		✓	195 PSI	NS	31-3-25	
65	ACP-PFE-157		6120		✓		✓		✓	195 PSI	NS	31-3-25	
66	ACP-PFE-158	Ocean Wing 27	6121		✓		✓		✓	195 PSI	NS	31-3-25	
67	ACP-PFE-159		6123		✓		✓		✓	195 PSI	NS	31-3-25	
68	ACP-PFE-160	Ocean Wing 28	6124		✓		✓		✓	195 PSI	NS	31-3-25	
69	ACP-PFE-161		6126		✓		✓		✓	195 PSI	NS	31-3-25	
70	ACP-PFE-162	Ocean Wing 29	6127	✓	✓		✓		✓	195 PSI	NS	31-3-25	
71	ACP-PFE-163		6128		✓		✓		✓	195 PSI	NS	31-3-25	
72	ACP-PFE-164	Ocean Wing 30	6129		✓		✓		✓	195 PSI	NS	31-3-25	
73	ACP-PFE-165		6130		✓		✓		✓	195 PSI	NS	31-3-25	



# Engineering Department

## FLS - 10 : Portable Fire Extinguishers

FLS 10-02 Record of monthly inspection of all Portable Fire Extinguishers.

Month: March Year: 2025

Item No.	FLS CODE	Area		Extinguisher (Dry chemical)							Checked by	Date	Remark
				Type of Chemical			Physical		Gauge				
		Section	Location	Dry	Halotron	Wet chemical	Normal	Abnormal	Status	Pressure			
74	ACP-PFE-166	Ocean Wing 31	6131		✓		✓		✓	195 PSI	NR	31-3-25	
75	ACP-PFE-167		6132		✓		✓		✓	195 PSI	NR	31-3-25	
76	ACP-PFE-168	Ocean Wing 32	6133		✓		✓		✓	195 PSI	NR	31-3-25	
77	ACP-PFE-169		6134		✓		✓		✓	195 PSI	NR	31-3-25	
78	ACP-PFE-170	Ocean Wing 33	6135		✓		✓		✓	195 PSI	NR	31-3-25	
79	ACP-PFE-171		6136		✓		✓		✓	195 PSI	NR	31-3-25	
80	ACP-PFE-172	Ocean Wing 34	6137		✓		✓		✓	195 PSI	NR	31-3-25	
81	ACP-PFE-173		6138		✓		✓		✓	195 PSI	NR	31-3-25	
82	ACP-PFE-174	Ocean Wing 35	6139		✓		✓		✓	195 PSI	NR	31-3-25	
83	ACP-PFE-175		6141		✓		✓		✓	195 PSI	NR	31-3-25	
84	ACP-PFE-176	Ocean Wing 36	6142		✓		✓		✓	195 PSI	NR	31-3-25	
85	ACP-PFE-177		6144		✓		✓		✓	195 PSI	NR	31-3-25	
86	ACP-PFE-178	Ocean Wing 37	6145	✓	✓		✓		✓	195 PSI	NR	31-3-25	
87	ACP-PFE-179		6147		✓		✓		✓	195 PSI	NR	31-3-25	
88	ACP-PFE-180	Ocean Wing 38	6148		✓		✓		✓	195 PSI	NR	31-3-25	Not working
89	ACP-PFE-181		6149		✓		✓		✓	195 PSI	NR	31-3-25	
90	ACP-PFE-182	Ocean Wing 39	6200		✓		✓		✓	195 PSI	NR	31-3-25	Not working
91	ACP-PFE-183		6202		✓		✓		✓	195 PSI	NR	31-3-25	Not working
92	ACP-PFE-184	Ocean Wing 40	6203		✓		✓		✓	195 PSI	NR	31-3-25	Not working
93	ACP-PFE-185		6205		✓		✓		✓	195 PSI	NR	31-3-25	Not working
94	ACP-PFE-186	Ocean Wing 41	6206		✓		✓		✓	195 PSI	NR	31-3-25	Not working
95	ACP-PFE-187		6208		✓		✓		✓	195 PSI	NR	31-3-25	Not working
96	ACP-PFE-188	Ocean Wing 42	6209		✓		✓		✓	195 PSI	NR	31-3-25	Not working
97	ACP-PFE-189		6211		✓		✓		✓	195 PSI	NR	31-3-25	Not working



# Engineering Department

## FLS - 10 : Portable Fire Extinguishers

FLS 10-02 Record of monthly inspection of all Portable Fire Extinguishers.

Month: March Year: 2025

Item No.	FLS CODE	Area		Extinguisher (Dry chemical)							Checked by	Date	Remark
				Type of Chemical			Physical		Gauge				
		Section	Location	Dry	Halotron	Wet chemical	Normal	Abnormal	Status	Pressure			
98	ACP-PFE-190	Ocean Wing 43	6212		/		/		/	195 PSI	NS	31-3-25	Not in use
99	ACP-PFE-191		6215		/		/		/	195 PSI	NI	31-3-25	
100	ACP-PFE-192	Ocean Wing 44	6216		/		/		/	195 PSI	NI	31-3-25	
101	ACP-PFE-193		6218		/		/		/	195 PSI	NI	31-3-25	Not in use
102	ACP-PFE-194	Ocean Wing 45	6219		/		/		/	195 PSI	NI	31-3-25	Not in use
103	ACP-PFE-195		6221		/		/		/	195 PSI	NI	31-3-25	Not in use
104	ACP-PFE-196	Ocean Wing 46	6222		/		/		/	195 PSI	NI	31-3-25	
105	ACP-PFE-197		6224		/		/		/	195 PSI	NI	31-3-25	
106	ACP-PFE-198	Ocean Wing 47	6225	/			/		/	195 PSI	NI	31-3-25	
107	ACP-PFE-199		6227		/		/		/	195 PSI	NI	31-3-25	
108	ACP-PFE-200	Ocean Wing 48	6228		/		/		/	195 PSI	NI	31-3-25	
109	ACP-PFE-201		6230		/		/		/	195 PSI	NI	31-3-25	Not in use
110	ACP-PFE-202	Ocean Wing 49	6231	/			/		/	195 PSI	NI	31-3-25	
111	ACP-PFE-203		6233	/			/		/	195 PSI	NI	31-3-25	
112	ACP-PFE-204	Ocean Wing 50	6234	/			/		/	195 PSI	NI	31-3-25	
113	ACP-PFE-205		6236	/			/		/	195 PSI	NI	31-3-25	
114	ACP-PFE-206	ARP	Club Pakarang		/		/		/	195 PSI	NI	31-3-25	
115	ACP-PFE-207	ARP	MDB 4	/			/		/	195 PSI	NS	31-3-25	
116	ACP-PFE-208	ARP	Club Pakarang 1		/		/		/	195 PSI	NI	31-3-25	
117	ACP-PFE-209	ARP	Club Pakarang 2		/		/		/	195 PSI	NI	31-3-25	
118	ACP-PFE-210	ARP	C/P Kitchen		/		/		/	195 PSI	NI	31-3-25	
119	ACP-PFE-211	ARP	C/P Kitchen		/		/		/	195 PSI	NI	31-3-25	
120	ACP-PFE-212	ARP	EE-Pakarang		/		/		/	195 PSI	NI	31-3-25	
121	ACP-PFE-213	ARP	H/K 2		/		/		/	195 PSI	NS	31-3-25	
122	ACP-PFE-214	ARP	Fire pump1		/		/		/	195 PSI	NS	31-3-25	



# Engineering Department

## FLS - 10 : Portable Fire Extinguishers

FLS 10-02 Record of monthly inspection of all Portable Fire Extinguishers.

Month: March Year: 2025

Item No.	FLS CODE	Area		Extinguisher (Dry chemical)							Checked by	Date	Remark
				Type of Chemical			Physical		Gauge				
		Section	Location	Dry	Halotron	Wet chemical	Normal	Abnormal	Status	Pressure			
123	ACP-PFE-215	ARP	Fire pump2		✓		✓		✓	195 PSI	W	31-3-25	
124	ACP-PFE-216	ARP	Genarator2		✓		✓		✓	195 PSI	W	31-3-25	
125	ACP-PFE-217	ARP	MDB3		✓		✓		✓	195 PSI	W	31-3-25	
126	ACP-PFE-218	ARP	Staff toilet A7	✓			✓		✓	195 PSI	W	31-3-25	
127	ACP-PFE-219	ARP	Tranformer 4	✓			✓		✓	195 PSI	W	31-3-25	
128	ACP-PFE-220	ARP	Coral Kitchen		✓		✓		✓	195 PSI	W	31-3-25	
129	ACP-PFE-221	ARP	H/K1		✓		✓		✓	195 PSI	W	31-3-25	
130	ACP-PFE-222	ARP	H/K3		✓		✓		✓	195 PSI	W	31-3-25	
131	ACP-PFE-223	ARP	H/K4		✓		✓		✓	195 PSI	W	31-3-25	
132	ACP-PFE-224	ARP	Fire Pump3			✓	✓		✓	195 PSI	W	31-3-25	

Acknowledge by: OK FLS/TM.

Fire-Life Safety Teamleader

Approved by: .....

Heads of Department



# Engineering Department

## FLS - 10 : Portable Fire Extinguishers

10-02 Record of monthly inspection of all Portable Fire Extinguishers.

Month: APRIL Year: 2025

Item no.	FLS CODE	Area		Fire Extinguisher							Checked by	Date	Remark
				Type of Chemical			Physical		Gauge				
		Section	Location	Dry	Halotron	Wet chemical	Normal	Abnormal	Status	Pressure			
1	ACP-PFE-001	Floor 1/1	1101		✓		✓		✓	195 PSI	MS	18-4-25	
2	ACP-PFE-002	Floor 1/2	1206		✓		✓		✓	195 PSI	MS	18-4-25	
3	ACP-PFE-003	Floor 2/1	2101		✓		✓		✓	195 PSI	MS	18-4-25	
4	ACP-PFE-004	Floor 2/2	2204		✓		✓		✓	195 PSI	MS	18-4-25	
5	ACP-PFE-005	Floor 3/1	3101		✓		✓		✓	195 PSI	MS	18-4-25	
6	ACP-PFE-006	Floor 3/2	3201		✓		✓		✓	195 PSI	MS	18-4-25	
7	ACP-PFE-007	Floor 4/1	4101		✓		✓		✓	195 PSI	MS	18-4-25	
8	ACP-PFE-008	Floor 4/2	4205		✓		✓		✓	195 PSI	MS	18-4-25	
9	ACP-PFE-009	Floor 4/3	4305		✓		✓		✓	195 PSI	MS	18-4-25	
10	ACP-PFE-010	Building4	EE Room		✓		✓		✓	195 PSI	MS	18-4-25	
11	ACP-PFE-011	Building5	5105		✓		✓		✓	195 PSI	MS	18-4-25	
12	ACP-PFE-012	Building5	5205		✓		✓		✓	195 PSI	MS	18-4-25	
13	ACP-PFE-013	Building5	5305		✓		✓		✓	195 PSI	MS	18-4-25	
14	ACP-PFE-014	Building7	Coridor B7FL1		✓		✓		✓	195 PSI	MS	18-4-25	
15	ACP-PFE-015	Building7	Store B7FL 2		✓		✓		✓	195 PSI	MS	18-4-25	
16	ACP-PFE-016	Building7	Store B7FL 3		✓		✓		✓	195 PSI	MS	18-4-25	
17	ACP-PFE-017	Building7	7107		✓		✓		✓	195 PSI	MS	18-4-25	
18	ACP-PFE-018	Building7	7123		✓		✓		✓	195 PSI	MS	18-4-25	
19	ACP-PFE-019	Building7	7207		✓		✓		✓	195 PSI	MS	18-4-25	
20	ACP-PFE-020	Building7	7223		✓		✓		✓	195 PSI	MS	18-4-25	
21	ACP-PFE-021	Building7	7307		✓		✓		✓	195 PSI	MS	18-4-25	
22	ACP-PFE-022	Building7	7323		✓		✓		✓	195 PSI	MS	18-4-25	
23	ACP-PFE-023	Lagritta	La Gritta Kitchen			✓	✓		✓	195 PSI	MS	18-4-25	
24	ACP-PFE-024	Lagritta	La Gritta Kitchen		✓		✓		✓	195 PSI	MS	18-4-25	
25	ACP-PFE-025	Lagritta Bar	La Gritta bar		✓		✓		✓	195 PSI	MS	18-4-25	
26	ACP-PFE-026	Main Store	Main Store		✓		✓		✓	195 PSI	MS	18-4-25	



Item no.	FLS CODE	Area		Fire Extinguisher							Checked by	Date	Remark
				Type of Chemical			Physical		Gauge				
		Section	Location	Dry	Halotron	Wet chemical	Normal	Abnormal	Status	Pressure			
27	✓ ACP-PFE-027	Building 1	In Garden Room		✓		✓		✓	195 PSI	MS	18-4-25	1m
28	ACP-PFE-028	Building 1	In Florist Room		✓		✓		✓	195 PSI	MS	18-4-25	
29	ACP-PFE-029	Garbage	The Room		✓		✓		✓	195 PSI	MS	18-4-25	
30	ACP-PFE-030	Garbage	The Room		✓		✓		✓	195 PSI	MS	18-4-25	
31	ACP-PFE-031	Staff Canteer	In The Kitchen		✓		✓		✓	195 PSI	MS	18-4-25	
32	ACP-PFE-032	Staff Canteer	In The Kitchen		✓		✓		✓	195 PSI	MS	18-4-25	
33	ACP-PFE-033	Staff Canteer	In The Kitchen			✓	✓		✓	195 PSI	MS	18-4-25	
34	ACP-PFE-034	Staff Canteer	Station Gas		✓		✓		✓	195 PSI	MS	18-4-25	
35	ACP-PFE-035	Male Locker	In Staff Toilets		✓		✓		✓	195 PSI	MS	18-4-25	
36	ACP-PFE-036	Female Locker	In Staff Toilets				✓		✓	195 PSI	MS	18-4-25	
37	ACP-PFE-037	HR. Room	In HR. Room		✓		✓		✓	195 PSI	MS	18-4-25	
38	ACP-PFE-038	MDB3	Out HR. Room		✓		✓		✓	195 PSI	MS	18-4-25	
39	ACP-PFE-039	Lagritta Pool	Lagritta Pool		✓		✓		✓	195 PSI	MS	18-4-25	1m
40	ACP-PFE-040	Lobby	Entrance (OPR)		✓		✓		✓	195 PSI	MS	18-4-25	
41	ACP-PFE-041	Store bell	In The Room		✓		✓		✓	195 PSI	MS	18-4-25	
42	ACP-PFE-042	Executive Offices	Door Offices		✓		✓		✓	195 PSI	MS	18-4-25	
43	ACP-PFE-043	Lagritta Station Gas	Lobby	✓			✓		✓	195 PSI	MS	18-4-25	
44	ACP-PFE-044	Lagritta Station Gas	Lobby	✓			✓		✓	195 PSI	MS	18-4-25	
45	ACP-PFE-045	Secueity No.1	Enteance	✓			✓		✓	195 PSI	MS	18-4-25	
46	ACP-PFE-046	Secueity No.2	Lobby		✓		✓		✓	195 PSI	MS	18-4-25	
47	ACP-PFE-047	Secueity No.3	Old Time Kepper		✓		✓		✓	195 PSI	MS	18-4-25	
48	ACP-PFE-048	Accounting	In The Room		✓		✓		✓	195 PSI	MS	18-4-25	
49	ACP-PFE-049	Main Kitchen	Entrance		✓		✓		✓	195 PSI	MS	18-4-25	
50	ACP-PFE-050	Main Kitchen	Entrance		✓		✓		✓	195 PSI	MS	18-4-25	
51	ACP-PFE-051	Main Kitchen	Out The Room			✓	✓		✓	195 PSI	MS	18-4-25	
52	ACP-PFE-052	Main Kitchen	In The Room			✓	✓		✓	195 PSI	MS	18-4-25	
53	ACP-PFE-053	House Keepping	In The Room		✓		✓		✓	195 PSI	MS	18-4-25	
54	ACP-PFE-054	Generator MDB 1	Entrance			✓	✓		✓	195 PSI	MS	18-4-25	
55	ACP-PFE-055	Generator MDB 1	In The Room		✓		✓		✓	195 PSI	MS	18-4-25	
56	ACP-PFE-056	Laundry	Up The Stairs		✓		✓		✓	195 PSI	MS	18-4-25	
57	ACP-PFE-057	Laundry	Laundry		✓		✓		✓	195 PSI	MS	18-4-25	
58	ACP-PFE-058	Laundry	Laundry		✓		✓		✓	195 PSI	MS	18-4-25	
	ACP-PFE-059	Laundry	Laundry		✓		✓		✓	195 PSI	MS	18-4-25	



Item no.	FLS CODE	Area		Fire Extinguisher							Checked by	Date	Remark
				Type of Chemical			Physical		Gauge				
		Section	Location	Dry	Halotron	Wet chemical	Normal	Abnormal	Status	Pressure			
60	ACP-PFE-060	Laundry	Laundry		✓		✓		✓	195 PSI	ms	18-4-25	
61	ACP-PFE-061	Boiler room	Boiler room		✓		✓		✓	195 PSI	ms	18-4-25	
62	ACP-PFE-062	Eng. Work Shop	Tools Room		✓		✓		✓	195 PSI	ms	18-4-25	
63	ACP-PFE-063	Eng. Work Shop	MDB Room		✓		✓		✓	195 PSI	ms	18-4-25	
64	ACP-PFE-064	Eng. Work Shop	Painter Room	✓	✓		✓		✓	195 PSI	ms	18-4-25	(Inventory 128 1100)
65	ACP-PFE-065	Oil Station	Desel Tank			✓	✓		✓	195 PSI	ms	18-4-25	
66	ACP-PFE-066	Walkway Rim talay			✓		✓		✓	195 PSI	ms	18-4-25	
67	✓ ACP-PFE-067	Voyagerlounge			✓		✓		✓	195 PSI	ms	18-4-25	
68	ACP-PFE-068	Gas Station	Laundry		✓		✓		✓	195 PSI	ms	18-4-25	
69	ACP-PFE-069	Mortorbike Garage1			✓		✓		✓	195 PSI	ms	18-4-25	
70	ACP-PFE-070	Mortorbike Garage2			✓		✓		✓	195 PSI	ms	18-4-25	
71	ACP-PFE-071	Rimtalay pump room			✓		✓		✓	195 PSI	ms	18-4-25	
72	ACP-PFE-072	Kid club			✓		✓		✓	195 PSI	ms	18-4-25	
73	ACP-PFE-073	Fire Training			✓		✓		✓	195 PSI	ms	18-4-25	
74	ACP-PFE-074	PABX room			✓		✓		✓	195 PSI	ms	18-4-25	
75	ACP-PFE-075	EE room B.2			✓		✓		✓	195 PSI	ms	18-4-25	
76	ACP-PFE-076	Pantry samurt bar 1	Samut Bar		✓		✓		✓	195 PSI	ms	18-4-25	
77	ACP-PFE-077	Pantry samurt bar 2	Samut Bar		✓		✓		✓	195 PSI	ms	18-4-25	
78	ACP-PFE-078	Idea Station Gas	Idea Room		✓		✓		✓	195 PSI	ms	18-4-25	
79	ACP-PFE-079	Sport Center			✓		✓		✓	195 PSI	ms	18-4-25	
80	ACP-PFE-080	Sport Center			✓		✓		✓	195 PSI	ms	18-4-25	
81	ACP-PFE-081	Server Room			✓		✓		✓	195 PSI	ms	18-4-25	
82	ACP-PFE-082	SPA	Front Spa		✓		✓		✓	195 PSI	ms	18-4-25	
83	ACP-PFE-083		Spa Reception		✓		✓		✓	195 PSI	ms	18-4-25	
84	ACP-PFE-084		Spa Sala 1		✓		✓		✓	195 PSI	ms	18-4-25	
85	ACP-PFE-085		Spa Sala 2		✓		✓		✓	195 PSI	ms	18-4-25	
86	ACP-PFE-086		Spa Sala 3		✓		✓		✓	195 PSI	ms	18-4-25	
87	ACP-PFE-087		Spa Sala 4		✓		✓		✓	195 PSI	ms	18-4-25	
88	ACP-PFE-088	Fitness			✓		✓		✓	195 PSI	ms	18-4-25	



Item no.	FLS CODE	Area		Fire Extinguisher							Checked by	Date	Remark
				Type of Chemical			Physical		Gauge				
		Section	Location	Dry	Halotron	Wet chemical	Normal	Abnormal	Status	Pressure			
89	ACP-PFE-089	Lift			✓		✓		✓	195 psi	ms	18-4-25	
90	ACP-PFE-090	GM House			✓		✓		✓	195 psi	ms	18-4-25	
91	ACP-PFE-091	Jetty 1			✓		✓		✓	195 psi	ms	18-4-25	
92	ACP-PFE-092	Jetty 2			✓		✓		✓	195 psi	ms	18-4-25	
93	ACP-PFE-093	Gas Station	Laundry		✓		✓		✓	195 psi	ms	18-4-25	
	225												

Acknowledge by: <sup>ms</sup>.....  
FLS/TM.

Fire-Life Safety Teamleader

Approved by: .....

Heads of Department



# Engineering Department

## FLS - 10 : Portable Fire Extinguishers

FLS 10-02 Record of monthly inspection of all Portable Fire Extinguishers.

Month: APRIL Year: 2025

Item No.	FLS CODE	Area		Extinguisher (Dry chemical)							Checked by	Date	Remark
				Type of Chemical			Physical		Gauge				
		Section	Location	Dry	Halotron	Wet chemical	Normal	Abnormal	Status	Pressure			
1	ACP-PFE-093	Ocean Wing 1	6000		✓		✓		✓	195 PSI	MS	18-04-25	
2	ACP-PFE-094		6002		✓		✓		✓	195 PSI	MS	18-04-25	
3	ACP-PFE-095		6004		✓		✓		✓	195 PSI	MS	18-04-25	
4	ACP-PFE-096	Ocean Wing 2	6006		✓		✓		✓	195 PSI	MS	18-04-25	
5	ACP-PFE-097		6008		✓		✓		✓	195 PSI	MS	18-04-25	
6	ACP-PFE-098		6010		✓		✓		✓	195 PSI	MS	18-04-25	
7	ACP-PFE-099	Ocean Wing 3	6012		✓		✓		✓	195 PSI	MS	18-04-25	
8	ACP-PFE-100		6015		✓		✓		✓	195 PSI	MS	18-04-25	
9	ACP-PFE-101		6016		✓		✓		✓	195 PSI	MS	18-04-25	
10	ACP-PFE-102	Ocean Wing 4	6017		✓		✓		✓	195 PSI	MS	18-04-25	
11	ACP-PFE-103		6020		✓		✓		✓	195 PSI	MS	18-04-25	
12	ACP-PFE-104	Ocean Wing 5	6021		✓		✓		✓	195 PSI	MS	18-04-25	
13	ACP-PFE-105		6023		✓		✓		✓	195 PSI	MS	18-04-25	
14	ACP-PFE-106	Ocean Wing 6	6024		✓		✓		✓	195 PSI	MS	18-04-25	
15	ACP-PFE-107		6026		✓		✓		✓	195 PSI	MS	18-04-25	
16	ACP-PFE-108	Ocean Wing 7	6028		✓		✓		✓	195 PSI	MS	18-04-25	
17	ACP-PFE-109		6031		✓		✓		✓	195 PSI	MS	18-04-25	
18	ACP-PFE-110	Ocean Wing 8	6032		✓		✓		✓	195 PSI	MS	18-04-25	
19	ACP-PFE-111		6035		✓		✓		✓	195 PSI	MS	18-04-25	
20	ACP-PFE-112	Ocean Wing 9	6036		✓		✓		✓	195 PSI	MS	18-04-25	
21	ACP-PFE-113		6038		✓		✓		✓	195 PSI	MS	18-04-25	
22	ACP-PFE-114		6040		✓		✓		✓	195 PSI	MS	18-04-25	
23	ACP-PFE-0115	Ocean Wing 10	6042		✓		✓		✓	195 PSI	MS	18-04-25	
24	ACP-PFE-0116		6044		✓		✓		✓	195 PSI	MS	18-04-25	



# Engineering Department

## FLS - 10 : Portable Fire Extinguishers

FLS 10-02 Record of monthly inspection of all Portable Fire Extinguishers.

Month: APRIL Year: 2015

Item No.	FLS CODE	Area		Extinguisher (Dry chemical)							Checked by	Date	Remark
				Type of Chemical			Physical		Gauge				
		Section	Location	Dry	Halotron	Wet chemical	Normal	Abnormal	Status	Pressure			
25	ACP-PFE-0117		6046		✓		✓		✓	195 PSI	ms	18-04-25	
26	ACP-PFE-0118	Ocean Wing 11	6048		✓		✓		✓	195 PSI	ms	18-04-25	
27	ACP-PFE-0119		6050		✓		✓		✓	195 PSI	mr	18-04-25	
28	ACP-PFE-0120		6052		✓		✓		✓	195 PSI	mr	18-04-25	
29	ACP-PFE-0121		6053		✓		✓		✓	195 PSI	mr	18-04-25	
30	ACP-PFE-0122	Ocean Wing 12	6055		✓		✓		✓	195 PSI	mr	18-04-25	
31	ACP-PFE-0123		6057		✓		✓		✓	195 PSI	mr	18-04-25	
32	ACP-PFE-0124		6058		✓		✓		✓	195 PSI	mr	18-04-25	
33	ACP-PFE-0125	Ocean Wing 13	6060		✓		✓		✓	195 PSI	ms	18-04-25	
34	ACP-PFE-0126		6062		✓		✓		✓	195 PSI	mr	18-04-25	
35	ACP-PFE-0127		6063		✓		✓		✓	195 PSI	mr	18-04-25	
36	ACP-PFE-0128	Ocean Wing 14	6066		✓		✓		✓	195 PSI	ms	18-04-25	
37	ACP-PFE-0129		6067		✓		✓		✓	195 PSI	mr	18-04-25	
38	ACP-PFE-0130	Ocean Wing 15	6069		✓		✓		✓	195 PSI	ms	18-04-25	
39	ACP-PFE-0131		6071		✓		✓		✓	195 PSI	mr	18-04-25	
40	ACP-PFE-0132	Ocean Wing 16	6073		✓		✓		✓	195 PSI	ms	18-04-25	
41	ACP-PFE-0133		6075		✓		✓		✓	195 PSI	mr	18-04-25	
42	ACP-PFE-0134	Ocean Wing 17	6077		✓		✓		✓	195 PSI	mr	18-04-25	
43	ACP-PFE-0135		6079		✓		✓		✓	195 PSI	ms	18-04-25	
44	ACP-PFE-0136	Ocean Wing 18	6081		✓		✓		✓	195 PSI	mr	18-04-25	
45	ACP-PFE-0137		6083		✓		✓		✓	195 PSI	mr	18-04-25	
46	ACP-PFE-0138	Ocean Wing 19	6085		✓		✓		✓	195 PSI	ms	18-04-25	
47	ACP-PFE-0139		6086		✓		✓		✓	195 PSI	ms	18-04-25	
48	ACP-PFE-0140		6087		✓		✓		✓	195 PSI	mr	18-04-25	
49	ACP-PFE-0141	Ocean Wing 20	6089		✓		✓		✓	195 PSI	mr	18-04-25	



# Engineering Department

## FLS - 10 : Portable Fire Extinguishers

FLS 10-02 Record of monthly inspection of all Portable Fire Extinguishers.

Month: APRIL Year: 2015

Item No.	FLS CODE	Area		Extinguisher (Dry chemical)							Checked by	Date	Remark
				Type of Chemical			Physical		Gauge				
		Section	Location	Dry	Halotron	Wet chemical	Normal	Abnormal	Status	Pressure			
50	ACP-PFE-0142		6090		✓		✓		✓	195 PSI	ms	18-4-25	
51	ACP-PFE-143	Ocean Wing 21	6091		✓		✓		✓	195 PSI	ms	18-4-25	
52	ACP-PFE-144		6093		✓		✓		✓	195 PSI	ms	18-4-25	
53	ACP-PFE-145		6096		✓		✓		✓	195 PSI	ms	18-4-25	
54	ACP-PFE-146	Ocean Wing 22	6097		✓		✓		✓	195 PSI	ms	18-4-25	
55	ACP-PFE-147		6099		✓		✓		✓	195 PSI	ms	18-4-25	
56	ACP-PFE-148		6101		✓		✓		✓	195 PSI	ms	18-4-25	
57	ACP-PFE-149	Ocean Wing 23	6103		✓		✓		✓	195 PSI	ms	18-4-25	
58	ACP-PFE-150		6105		✓		✓		✓	195 PSI	ms	18-4-25	
59	ACP-PFE-151		6107		✓		✓		✓	195 PSI	ms	18-4-25	
60	ACP-PFE-152	Ocean Wing 24	6109		✓		✓		✓	195 PSI	ms	18-4-25	
61	ACP-PFE-153		6112		✓		✓		✓	195 PSI	ms	18-4-25	
62	ACP-PFE-154	Ocean Wing 25	6114		✓		✓		✓	195 PSI	ms	18-4-25	
63	ACP-PFE-155		6116		✓		✓		✓	195 PSI	ms	18-4-25	
64	ACP-PFE-156	Ocean Wing 26	6118		✓		✓		✓	195 PSI	ms	18-4-25	
65	ACP-PFE-157		6120		✓		✓		✓	195 PSI	ms	18-4-25	
66	ACP-PFE-158	Ocean Wing 27	6121		✓		✓		✓	195 PSI	ms	18-4-25	
67	ACP-PFE-159		6123		✓		✓		✓	195 PSI	ms	18-4-25	
68	ACP-PFE-160	Ocean Wing 28	6124		✓		✓		✓	195 PSI	ms	18-4-25	
69	ACP-PFE-161		6126		✓		✓		✓	195 PSI	ms	18-4-25	
70	ACP-PFE-162	Ocean Wing 29	6127	✓			✓		✓	195 PSI	ms	18-4-25	
71	ACP-PFE-163		6128		✓		✓		✓	195 PSI	ms	18-4-25	
72	ACP-PFE-164	Ocean Wing 30	6129		✓		✓		✓	195 PSI	ms	18-4-25	
73	ACP-PFE-165		6130		✓		✓		✓	195 PSI	ms	18-4-25	



# Engineering Department

## FLS - 10 : Portable Fire Extinguishers

FLS 10-02 Record of monthly inspection of all Portable Fire Extinguishers.

Month: APRIL Year: 2025

Item No.	FLS CODE	Area		Extinguisher (Dry chemical)							Checked by	Date	Remark
				Type of Chemical			Physical		Gauge				
		Section	Location	Dry	Halotron	Wet chemical	Normal	Abnormal	Status	Pressure			
74	ACP-PFE-166	Ocean Wing 31	6131		✓		✓		✓	195 PSI	NR	18-04-25	
75	ACP-PFE-167		6132		✓		✓		✓	195 PSI	NR	18-04-25	
76	ACP-PFE-168	Ocean Wing 32	6133		✓		✓		✓	195 PSI	NR	18-04-25	
77	ACP-PFE-169		6134		✓		✓		✓	195 PSI	NR	18-04-25	
78	ACP-PFE-170	Ocean Wing 33	6135		✓		✓		✓	195 PSI	NR	18-04-25	
79	ACP-PFE-171		6136		✓		✓		✓	195 PSI	NR	18-04-25	
80	ACP-PFE-172	Ocean Wing 34	6137		✓		✓		✓	195 PSI	NR	18-04-25	
81	ACP-PFE-173		6138		✓		✓		✓	195 PSI	NR	18-04-25	
82	ACP-PFE-174	Ocean Wing 35	6139		✓		✓		✓	195 PSI	NR	18-04-25	
83	ACP-PFE-175		6141		✓		✓		✓	195 PSI	NR	18-04-25	
84	ACP-PFE-176	Ocean Wing 36	6142		✓		✓		✓	195 PSI	NR	18-04-25	
85	ACP-PFE-177		6144		✓		✓		✓	195 PSI	NR	18-04-25	
86	ACP-PFE-178	Ocean Wing 37	6145	✓	✗		✓		✓	195 PSI	NR	18-04-25	
87	ACP-PFE-179		6147		✓		✓		✓	195 PSI	NR	18-04-25	
88	ACP-PFE-180	Ocean Wing 38	6148		✓		✓		✓	195 PSI	NR	18-04-25	
89	ACP-PFE-181		6149		✓		✓		✓	195 PSI	NR	18-04-25	
90	ACP-PFE-182	Ocean Wing 39	6200		✓		✓		✓	195 PSI	NR	18-04-25	
91	ACP-PFE-183		6202		✓		✓		✓	195 PSI	NR	18-04-25	
92	ACP-PFE-184	Ocean Wing 40	6203		✓		✓		✓	195 PSI	NR	18-04-25	
93	ACP-PFE-185		6205		✓		✓		✓	195 PSI	NR	18-04-25	
94	ACP-PFE-186	Ocean Wing 41	6206		✓		✓		✓	195 PSI	NR	18-04-25	
95	ACP-PFE-187		6208		✓		✓		✓	195 PSI	NR	18-04-25	
96	ACP-PFE-188	Ocean Wing 42	6209		✓		✓		✓	195 PSI	NR	18-04-25	
97	ACP-PFE-189		6211		✓		✓		✓	195 PSI	NR	18-04-25	



# Engineering Department

## FLS - 10 : Portable Fire Extinguishers

FLS 10-02 Record of monthly inspection of all Portable Fire Extinguishers.

Month: APRIL Year: 2025

Item No.	FLS CODE	Area		Extinguisher (Dry chemical)							Checked by	Date	Remark
				Type of Chemical			Physical		Gauge				
		Section	Location	Dry	Halotron	Wet chemical	Normal	Abnormal	Status	Pressure			
98	ACP-PFE-190	Ocean Wing 43	6212		✓				✓	195 Psi	ms	18-4-25	
99	ACP-PFE-191		6215		✓				✓	195 Psi	ms	18-4-25	
100	ACP-PFE-192	Ocean Wing 44	6216		✓				✓	195 Psi	ms	18-4-25	
101	ACP-PFE-193		6218		✓				✓	195 Psi	ms	18-4-25	
102	ACP-PFE-194	Ocean Wing 45	6219		✓				✓	195 Psi	ms	18-4-25	
103	ACP-PFE-195		6221		✓				✓	195 Psi	ms	18-4-25	
104	ACP-PFE-196	Ocean Wing 46	6222		✓				✓	195 Psi	ms	18-4-25	
105	ACP-PFE-197		6224		✓				✓	195 Psi	ms	18-4-25	
106	ACP-PFE-198	Ocean Wing 47	6225	✓	✓				✓	195 Psi	ms	18-4-25	
107	ACP-PFE-199		6227		✓				✓	195 Psi	ms	18-4-25	
108	ACP-PFE-200	Ocean Wing 48	6228		✓				✓	195 Psi	ms	18-4-25	
109	ACP-PFE-201		6230		✓				✓	195 Psi	ms	18-4-25	
110	ACP-PFE-202	Ocean Wing 49	6231	✓	✓				✓	195 Psi	ms	18-4-25	
111	ACP-PFE-203		6233	✓					✓	195 Psi	ms	18-4-25	
112	ACP-PFE-204	Ocean Wing 50	6234	✓					✓	195 Psi	ms	18-4-25	
113	ACP-PFE-205		6236	✓					✓	195 Psi	ms	18-4-25	
114	ACP-PFE-206	ARP	Club Pakarang						✓	195 Psi	ms	18-4-25	
115	ACP-PFE-207	ARP	MDB 4		✓				✓	195 Psi	ms	18-4-25	
116	ACP-PFE-208	ARP	Club Pakarang 1		✓		✓	✓	✓	195 Psi	ms	18-4-25	
117	ACP-PFE-209	ARP	Club Pakarang 2		✓				✓	195 Psi	ms	18-4-25	
118	ACP-PFE-210	ARP	C/P Kitchen		✓				✓	195 Psi	ms	18-4-25	
119	ACP-PFE-211	ARP	C/P Kitchen		✓				✓	195 Psi	ms	18-4-25	
120	ACP-PFE-212	ARP	EE-Pakarang		✓				✓	195 Psi	ms	18-4-25	
121	ACP-PFE-213	ARP	H/K 2		✓				✓	195 Psi	ms	18-4-25	
122	ACP-PFE-214	ARP	Fire pump1		✓				✓	195 Psi	ms	18-4-25	



# Engineering Department

## FLS - 10 : Portable Fire Extinguishers

FLS 10-02 Record of monthly inspection of all Portable Fire Extinguishers.

Month: APR 12 Year: 2015

Item No.	FLS CODE	Area		Extinguisher (Dry chemical)							Checked by	Date	Remark		
				Type of Chemical			Physical		Gauge						
		Section	Location	Dry	Halotron	Wet chemical	Normal	Abnormal	Status	Pressure					
123	ACP-PFE-215	ARP	Fire pump2		✓		✓		✓	195 PSI	MS	18-4-25			
124	ACP-PFE-216	ARP	Genarator2		✓		✓		✓	195 PSI	MS	18-4-25			
125	ACP-PFE-217	ARP	MDB3		✓		✓		✓	195 PSI	MS	18-4-25			
126	ACP-PFE-218	ARP	Staff toilet A7	✓			✓		✓	195 PSI	MS	18-4-25			
127	ACP-PFE-219	ARP	Tranformer 4				✓		✓	195 PSI	MS	18-4-25			
128	ACP-PFE-220	ARP	Coral Kitchen		✓		✓		✓	195 PSI	MS	18-4-25			
129	ACP-PFE-221	ARP	H/K1		✓		✓		✓	195 PSI	MS	18-4-25			
130	ACP-PFE-222	ARP	H/K3				✓		✓	[REDACTED]	[REDACTED]	[REDACTED]			
131	ACP-PFE-223	ARP	H/K4		✓		✓		✓						
132	ACP-PFE-224	ARP	Fire Pump3			✓	✓		✓						

Acknowledge by: MS  
FLS/TM  
 Fire-Life Safety Teamleader

Approved by: .....

Heads of Department



## Engineering Department

### FLS - 10 : Portable Fire Extinguishers

10-02 Record of monthly inspection of all Portable Fire Extinguishers.

Month: May Year: 2026

Item no.	FLS CODE	Area		Fire Extinguisher							Checked by	Date	Remark
				Type of Chemical			Physical		Gauge				
		Section	Location	Dry	Halotron	Wet chemical	Normal	Abnormal	Status	Pressure			
1	ACP-PFE-001	Floor 1/1	1101		✓		✓		OK	195 PSI	MS	22-5-26	
2	ACP-PFE-002	Floor 1/2	1206		✓		✓		OK	195 PSI	MS	22-5-25	
3	ACP-PFE-003	Floor 2/1	2101		✓		✓		OK	195 PSI	MS	22-5-25	
4	ACP-PFE-004	Floor 2/2	2204		✓		✓		OK	195 PSI	MS	22-5-25	
5	ACP-PFE-005	Floor 3/1	3101		✓		✓		OK	195 PSI	MS	22-5-25	
6	ACP-PFE-006	Floor 3/2	3201		✓		✓		OK	195 PSI	MS	22-5-26	
7	ACP-PFE-007	Floor 4/1	4101		✓		✓		OK	195 PSI	MS	22-5-25	
8	ACP-PFE-008	Floor 4/2	4205		✓		✓		OK	195 PSI	MS	22-5-26	
9	ACP-PFE-009	Floor 4/3	4305		✓		✓		OK	195 PSI	MS	22-5-25	
10	ACP-PFE-010	Building4	EE Room		✓		✓		OK	195 PSI	MS	22-5-25	
11	ACP-PFE-011	Building5	5105		✓		✓		OK	195 PSI	MS	28-5-25	
12	ACP-PFE-012	Building5	5205		✓		✓		OK	195 PSI	MS	22-5-28	
13	ACP-PFE-013	Building5	5305		✓		✓		OK	195 PSI	MS	22-5-26	
14	ACP-PFE-014	Building7	Coridor B7FL1		✓		✓		OK	195 PSI	MS	22-5-26	
15	ACP-PFE-015	Building7	Store B7FL 2		✓		✓		OK	195 PSI	MS	22-5-26	
16	ACP-PFE-016	Building7	Store B7FL 3		✓		✓		OK	195 PSI	MS	22-5-26	
17	ACP-PFE-017	Building7	7107		✓		✓		OK	195 PSI	MS	22-5-26	
18	ACP-PFE-018	Building7	7123		✓		✓		OK	195 PSI	MS	22-5-26	
19	ACP-PFE-019	Building7	7207		✓		✓		OK	195 PSI	MS	22-5-26	
20	ACP-PFE-020	Building7	7223		✓		✓		OK	195 PSI	MS	22-5-26	
21	ACP-PFE-021	Building7	7307		✓		✓		OK	195 PSI	MS	22-5-26	
22	ACP-PFE-022	Building7	7323		✓		✓		OK	195 PSI	MS	22-5-26	
23	ACP-PFE-023	Lagritta	La Gritta Kitchen			✓	✓		OK	195 PSI	MS	27-5-26	
24	ACP-PFE-024	Lagritta	La Gritta Kitchen		✓		✓		OK	195 PSI	MS	27-5-25	
25	ACP-PFE-025	Lagritta Bar	La Gritta bar		✓		✓		OK	195 PSI	MS	27-5-28	
26	ACP-PFE-026	Main Store	Main Store		✓		✓		OK	195 PSI	MS	26-5-25	



Item no.	FLS CODE	Area		Fire Extinguisher							Checked by	Date	Remark
				Type of Chemical			Physical		Gauge				
		Section	Location	Dry	Halotron	Wet chemical	Normal	Abnormal	Status	Pressure			
27	ACP-PFE-027	Building 1	In Garden Room		✓		✓		OK	195 Psi	MS	22-5-26	
28	ACP-PFE-028	Building 1	In Florist Room		✓		✓		OK	195 Psi	MS	22-5-26	
29	ACP-PFE-029	Garbage	The Room		✓		✓		OK	195 Psi	MS	26-5-26	
30	ACP-PFE-030	Garbage	The Room		✓		✓		OK	195 Psi	MS	26-5-26	
31	ACP-PFE-031	Staff Canteer	In The Kitchen		✓		✓		OK	195 Psi	MS	26-5-26	
32	ACP-PFE-032	Staff Canteer	In The Kitchen		✓		✓		OK	195 Psi	MS	26-5-26	
33	ACP-PFE-033	Staff Canteer	In The Kitchen			✓	✓		OK	195 Psi	MS	26-5-26	
34	ACP-PFE-034	Staff Canteer	Station Gas		✓		✓		OK	195 Psi	MS	26-5-26	
35	ACP-PFE-035	Male Locker	In Staff Toilets		✓		✓		OK	195 Psi	MS	26-5-26	
36	ACP-PFE-036	Female Locker	In Staff Toilets		✓		✓		OK	195 Psi	MS	28-5-26	
37	ACP-PFE-037	HR. Room	In HR. Room		✓		✓		OK	195 Psi	MS	22-5-26	
38	ACP-PFE-038	MDB3	Out HR. Room		✓		✓		OK	195 Psi	MS	22-5-26	
39	ACP-PFE-039	Lagritta Pool	Lagritta Pool		✓		✓		OK	195 Psi	MS	22-5-26	
40	ACP-PFE-040	Lobby	Entrance (OPR)		✓		✓		OK	195 Psi	MS	22-5-26	
41	ACP-PFE-041	Store bell	In The Room		✓		✓		OK	195 Psi	MS	22-5-26	
42	ACP-PFE-042	Executive Offices	Door Offices		✓		✓		OK	195 Psi	MS	22-5-26	
43	ACP-PFE-043	Lagritta Station Gas	Lobby	✓			✓		OK	195 Psi	MS	22-5-26	
44	ACP-PFE-044	Lagritta Station Gas	Lobby	✓			✓		OK	195 Psi	MS	22-5-26	
45	ACP-PFE-045	Secueity No.1	Enteance	✓			✓		OK	195 Psi	MS	22-5-26	
46	ACP-PFE-046	Secueity No.2	Lobby		✓		✓		OK	195 Psi	MS	28-5-26	
47	ACP-PFE-047	Secueity No.3	Old Time Kepper		✓		✓		OK	195 Psi	MS	22-5-26	
48	ACP-PFE-048	Accounting	In The Room		✓		✓		OK	195 Psi	MS	22-5-26	
49	ACP-PFE-049	Main Kitchen	Entrance		✓		✓		OK	195 Psi	MS	26-5-26	
50	ACP-PFE-050	Main Kitchen	Entrance		✓		✓		OK	195 Psi	MS	26-5-26	
51	ACP-PFE-051	Main Kitchen	Out The Room			✓	✓		OK	195 Psi	MS	26-5-26	
52	ACP-PFE-052	Main Kitchen	In The Room			✓	✓		OK	195 Psi	MS	26-5-26	
53	ACP-PFE-053	House Keeping	In The Room		✓		✓		OK	195 Psi	MS	22-5-26	
54	ACP-PFE-054	Generator MDB 1	Entrance		✓		✓		OK	195 Psi	MS	22-5-26	
55	ACP-PFE-055	Generator MDB 1	In The Room		✓		✓		OK	195 Psi	MS	22-5-26	
56	ACP-PFE-056	Laundry	Up The Stairs		✓		✓		OK	195 Psi	MS	26-5-26	
57	ACP-PFE-057	Laundry	Laundry		✓		✓		OK	195 Psi	MS	26-5-26	
58	ACP-PFE-058	Laundry	Laundry		✓		✓		OK	195 Psi	MS	26-5-26	
59	ACP-PFE-059	Laundry	Laundry		✓		✓		OK	195 Psi	MS	26-5-26	



Item no.	FLS CODE	Area		Fire Extinguisher							Checked by	Date	Remark
				Type of Chemical			Physical		Gauge				
		Section	Location	Dry	Halotron	Wet chemical	Normal	Abnormal	Status	Pressure			
60	ACP-PFE-060	Laundry	Laundry		✓		✓		OK	195 PSI	MS	26-5-25	
61	ACP-PFE-061	Boiler room	Boiler room		✓		✓		OK	195 PSI	MS	28-5-25	
62	ACP-PFE-062	Eng. Work Shop	Tools Room		✓		✓		OK	195 PSI	MS	26-5-25	
63	ACP-PFE-063	Eng. Work Shop	MDB Room		✓		✓		OK	195 PSI	MS	23-5-25	
64	ACP-PFE-064	Eng. Work Shop	Painter Room		✓		✓		OK	195 PSI	MS	28-5-25	
65	ACP-PFE-065	Oil Station	Desel Tank			✓	✓		OK	195 PSI	MS	22-5-25	
66	ACP-PFE-066	Walkway Rim talay			✓		✓		OK	195 PSI	MS	26-5-25	
67	ACP-PFE-067	Voyagerlounge			✓		✓		OK	195 PSI	MS	22-5-25	
68	ACP-PFE-068	Gas Station	Laundry		✓		✓		OK	195 PSI	MS	25-5-25	
69	ACP-PFE-069	Mortorbike Garage1			✓		✓		OK	195 PSI	MS	28-5-25	
70	ACP-PFE-070	Mortorbike Garage2			✓		✓		OK	195 PSI	MS	28-5-25	
71	ACP-PFE-071	Rimtalay pump room			✓		✓		OK	195 PSI	MS	27-5-25	
72	ACP-PFE-072	Kid club			✓		✓		OK	195 PSI	MS	22-5-25	
73	ACP-PFE-073	Fire Training			✓		✓		OK	195 PSI	MS	22-5-25	
74	ACP-PFE-074	PABX room			✓		✓		OK	195 PSI	MS	22-5-25	
75	ACP-PFE-075	EE room B.2			✓		✓		OK	195 PSI	MS	22-5-25	
76	ACP-PFE-076	Pantry samurt bar 1	Samut Bar		✓		✓		OK	195 PSI	MS	22-5-25	
77	ACP-PFE-077	Pantry samurt bar 2	Samut Bar		✓		✓		OK	195 PSI	MS	22-5-25	
78	ACP-PFE-078	Idea Station Gas	Idea Room		✓		✓		OK	195 PSI	MS	22-5-25	
79	ACP-PFE-079	Sport Center			✓		✓		OK	195 PSI	MS	22-5-25	
80	ACP-PFE-080	Sport Center			✓		✓		OK	195 PSI	MS	28-5-25	
81	ACP-PFE-081	Server Room			✓		✓		OK	195 PSI	MS	27-5-25	
82	ACP-PFE-082	SPA	Front Spa		✓		✓		OK	195 PSI	MS	22-5-25	
83	ACP-PFE-083		Spa Reception		✓		✓		OK	195 PSI	MS	22-5-25	
84	ACP-PFE-084		Spa Sala 1		✓		✓		OK	195 PSI	MS	28-5-25	
85	ACP-PFE-085		Spa Sala 2		✓		✓		OK	195 PSI	MS	28-5-25	
86	ACP-PFE-086		Spa Sala 3		✓		✓		OK	195 PSI	MS	28-5-25	
87	ACP-PFE-087		Spa Sala 4		✓		✓		OK	195 PSI	MS	28-5-25	
88	ACP-PFE-088	Fitness			✓		✓		OK	195 PSI	MS	22-5-25	



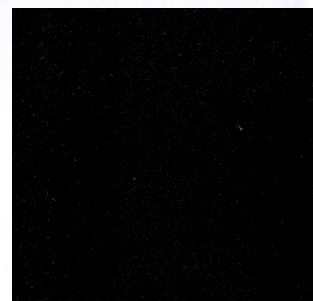
Item no.	FLS CODE	Area		Fire Extinguisher							Checked by	Date	Remark
				Type of Chemical			Physical		Gauge				
		Section	Location	Dry	Halotron	Wet chemical	Normal	Abnormal	Status	Pressure			
89	ACP-PFE-089	Lift			✓		✓		OK	195 PSI	MS	22-5-25	
90	ACP-PFE-090	GM House			✓		✓		OK	195 PSI	MS	22-5-25	
91	ACP-PFE-091	Jetty 1			✓		✓		OK	195 PSI	MS	22-5-25	
92	ACP-PFE-092	Jetty 2			✓		✓		OK	195 PSI	MS	22-5-25	
93	ACP-PFE-225	Gas Station	Laundry		✓		✓		OK	190 PSI	MS	28-5-25	

Acknowledge by: .....

Fire-Life Safety Teamleader

Approved by: ...

Heads of Department





# Engineering Department

## FLS - 10 : Portable Fire Extinguishers

FLS 10-02 Record of monthly inspection of all Portable Fire Extinguishers.

Month: May Year: 2025

Item No.	FLS CODE	Area		Extinguisher (Dry chemical)							Checked by	Date	Remark
				Type of Chemical			Physical		Gauge				
		Section	Location	Dry	Halotron	Wet chemical	Normal	Abnormal	Status	Pressure			
1	ACP-PFE-093	Ocean Wing 1	6000		/		✓		OK	195 PSI	NS	28-5-25	
2	ACP-PFE-094		6002		/		✓		OK	195 PSI	NS	28-5-25	
3	ACP-PFE-095		6004		/		✓		OK	195 PSI	NS	28-5-25	
4	ACP-PFE-096	Ocean Wing 2	6006		/		✓		OK	195 PSI	NS	28-5-25	
5	ACP-PFE-097		6008		/		✓		OK	195 PSI	NS	28-5-25	
6	ACP-PFE-098		6010		/		✓		OK	195 PSI	NS	28-5-25	
7	ACP-PFE-099	Ocean Wing 3	6012		/		✓		OK	195 PSI	NS	28-5-25	
8	ACP-PFE-100		6015		/		✓		OK	195 PSI	NS	28-5-25	
9	ACP-PFE-101		6016		/		✓		OK	195 PSI	NS	28-5-25	
10	ACP-PFE-102	Ocean Wing 4	6017		/		✓		OK	195 PSI	NS	28-5-25	
11	ACP-PFE-103		6020		/		✓		OK	195 PSI	NS	28-5-25	
12	ACP-PFE-104	Ocean Wing 5	6021		/		✓		OK	195 PSI	NS	28-5-25	
13	ACP-PFE-105		6023		/		✓		OK	195 PSI	NS	28-5-25	
14	ACP-PFE-106	Ocean Wing 6	6024		/		✓		OK	195 PSI	NS	28-5-25	
15	ACP-PFE-107		6026		/		✓		OK	195 PSI	NS	28-5-25	
16	ACP-PFE-108	Ocean Wing 7	6028		/		✓		OK	195 PSI	NS	28-5-25	
17	ACP-PFE-109		6031		/		✓		OK	195 PSI	NS	28-5-25	
18	ACP-PFE-110	Ocean Wing 8	6032		/		✓		OK	195 PSI	NS	28-5-25	
19	ACP-PFE-111		6035		/		✓		OK	195 PSI	NS	28-5-25	
20	ACP-PFE-112	Ocean Wing 9	6036		/		✓		OK	195 PSI	NS	28-5-25	
21	ACP-PFE-113		6038		/		✓		OK	195 PSI	NS	28-5-25	
22	ACP-PFE-114		6040		/		✓		OK	195 PSI	NS	28-5-25	
23	ACP-PFE-0115	Ocean Wing 10	6042		/		✓		OK	195 PSI	NS	28-5-25	
24	ACP-PFE-0116		6044		/		✓		OK	195 PSI	NS	28-5-25	



# Engineering Department

## FLS - 10 : Portable Fire Extinguishers

FLS 10-02 Record of monthly inspection of all Portable Fire Extinguishers.

Month:..... Year:.....

Item No.	FLS CODE	Area		Extinguisher (Dry chemical)							Checked by	Date	Remark
				Type of Chemical			Physical		Gauge				
		Section	Location	Dry	Halotron	Wet chemical	Normal	Abnormal	Status	Pressure			
25	ACP-PFE-0117		6046		/		✓		OK	196 PSI	MS	21-5-25	
26	ACP-PFE-0118	Ocean Wing 11	6048		/		✓		OK	196 PSI	MS	21-5-25	
27	ACP-PFE-0119		6050		/		✓		OK	196 PSI	MS	21-5-25	
28	ACP-PFE-0120		6052		/		✓		OK	196 PSI	MS	21-5-25	
29	ACP-PFE-0121		6053		/		✓		OK	195 PSI	MS	21-5-25	
30	ACP-PFE-0122	Ocean Wing 12	6055		/		✓		OK	196 PSI	MS	21-5-25	
31	ACP-PFE-0123		6057		/		✓		OK	196 PSI	MS	21-5-25	
32	ACP-PFE-0124		6058		/		✓		OK	196 PSI	MS	21-5-25	
33	ACP-PFE-0125	Ocean Wing 13	6060		/		✓		OK	195 PSI	MS	21-5-25	
34	ACP-PFE-0126		6062		/		✓		OK	196 PSI	MS	21-5-25	
35	ACP-PFE-0127	Ocean Wing 14	6063		/		✓		OK	196 PSI	MS	21-5-25	
36	ACP-PFE-0128		6066		/		✓		OK	196 PSI	MS	21-5-25	
37	ACP-PFE-0129	Ocean Wing 15	6067		/		✓		OK	196 PSI	MS	21-5-25	
38	ACP-PFE-0130		6069		/		✓		OK	196 PSI	MS	21-5-25	
39	ACP-PFE-0131	Ocean Wing 16	6071		/		✓		OK	195 PSI	MS	21-5-25	
40	ACP-PFE-0132		6073		/		✓		OK	195 PSI	MS	21-5-25	
41	ACP-PFE-0133	Ocean Wing 17	6075		/		✓		OK	195 PSI	MS	21-5-25	
42	ACP-PFE-0134		6077		/		✓		OK	196 PSI	MS	21-5-25	
43	ACP-PFE-0135	Ocean Wing 18	6079		/		✓		OK	196 PSI	MS	21-5-25	
44	ACP-PFE-0136		6081		/		✓		OK	196 PSI	MS	21-5-25	
45	ACP-PFE-0137	Ocean Wing 19	6083		/		✓		OK	196 PSI	MS	21-5-25	
46	ACP-PFE-0138		6085		/		✓		OK	196 PSI	MS	21-5-25	
47	ACP-PFE-0139		6086		/		✓		OK	196 PSI	MS	21-5-25	
48	ACP-PFE-0140	Ocean Wing 20	6087		/		✓		OK	195 PSI	MS	21-5-25	
49	ACP-PFE-0141		6089		/		✓		OK	196 PSI	MS	21-5-25	



# Engineering Department

## FLS - 10 : Portable Fire Extinguishers

FLS 10-02 Record of monthly inspection of all Portable Fire Extinguishers.

Month:..... Year:.....

Item No.	FLS CODE	Area		Extinguisher (Dry chemical)							Checked by	Date	Remark	
				Type of Chemical			Physical		Gauge					
		Section	Location	Dry	Halotron	Wet chemical	Normal	Abnormal	Status	Pressure				
50	ACP-PFE-0142		6090		✓		✓		OK	195 PSI	MS	28-5-25		
51	ACP-PFE-143	Ocean Wing 21	6091		✓		✓		OK	195 PSI	MS	28-5-25		
52	ACP-PFE-144		6093		✓		✓		OK	195 PSI	MS	28-5-25		
53	ACP-PFE-145		6096		✓		✓		OK	195 PSI	MS	28-5-25		
54	ACP-PFE-146		Ocean Wing 22	6097		✓		✓		OK	195 PSI	MS	28-5-25	
55	ACP-PFE-147	6099			✓		✓		OK	195 PSI	MS	28-5-25		
56	ACP-PFE-148	6101			✓		✓		OK	195 PSI	MS	28-5-25		
57	ACP-PFE-149	Ocean Wing 23		6103		✓		✓		OK	195 PSI	MS	28-5-25	
58	ACP-PFE-150		6105		✓		✓		OK	195 PSI	MS	28-5-25		
59	ACP-PFE-151		6107		✓		✓		OK	195 PSI	MS	28-5-25		
60	ACP-PFE-152		Ocean Wing 24	6109		✓		✓		OK	195 PSI	MS	28-5-25	
61	ACP-PFE-153	6112			✓		✓		OK	195 PSI	MS	28-5-25		
62	ACP-PFE-154	Ocean Wing 25		6114		✓		✓		OK	195 PSI	MS	28-5-25	
63	ACP-PFE-155			6116		✓		✓		OK	195 PSI	MS	28-5-25	
64	ACP-PFE-156		Ocean Wing 26	6118		✓		✓		OK	195 PSI	MS	28-5-25	
65	ACP-PFE-157			6120		✓		✓		OK	195 PSI	MS	28-5-25	
66	ACP-PFE-158	Ocean Wing 27		6121		✓		✓		OK	195 PSI	MS	28-5-25	
67	ACP-PFE-159			6123		✓		✓		OK	195 PSI	MS	28-5-25	
68	ACP-PFE-160		Ocean Wing 28	6124		✓		✓		OK	195 PSI	MS	28-5-25	
69	ACP-PFE-161			6126		✓		✓		OK	195 PSI	MS	28-5-25	
70	ACP-PFE-162	Ocean Wing 29		6127	✓			✓		OK	195 PSI	MS	28-5-25	
71	ACP-PFE-163			6128		✓		✓		OK	195 PSI	MS	28-5-25	
72	ACP-PFE-164		Ocean Wing 30	6129		✓		✓		OK	195 PSI	MS	28-5-25	
73	ACP-PFE-165			6130		✓		✓		OK	195 PSI	MS	28-5-25	



# Engineering Department

## FLS - 10 : Portable Fire Extinguishers

FLS 10-02 Record of monthly inspection of all Portable Fire Extinguishers.

Month: May Year: 2025

Item No.	FLS CODE	Area		Extinguisher (Dry chemical)							Checked by	Date	Remark
				Type of Chemical			Physical		Gauge				
		Section	Location	Dry	Halotron	Wet chemical	Normal	Abnormal	Status	Pressure			
74	ACP-PFE-166	Ocean Wing 31	6131		✓		✓		OK	195 PSI	MS	28-5-25	
75	ACP-PFE-167		6132		✓		✓		OK	195 PSI	MS	28-5-25	
76	ACP-PFE-168	Ocean Wing 32	6133		✓		✓		OK	195 PSI	MS	28-5-25	
77	ACP-PFE-169		6134		✓		✓		OK	195 PSI	MS	28-5-25	
78	ACP-PFE-170	Ocean Wing 33	6135		✓		✓		OK	195 PSI	MS	28-5-25	
79	ACP-PFE-171		6136		✓		✓		OK	195 PSI	MS	28-5-25	
80	ACP-PFE-172	Ocean Wing 34	6137		✓		✓		OK	195 PSI	MS	28-5-25	
81	ACP-PFE-173		6138		✓		✓		OK	195 PSI	MS	28-5-25	
82	ACP-PFE-174	Ocean Wing 35	6139		✓		✓		OK	195 PSI	MS	28-5-25	
83	ACP-PFE-175		6141		✓		✓		OK	195 PSI	MS	28-5-25	
84	ACP-PFE-176	Ocean Wing 36	6142		✓		✓		OK	195 PSI	MS	28-5-25	
85	ACP-PFE-177		6144		✓		✓		OK	195 PSI	MS	28-5-25	
86	ACP-PFE-178	Ocean Wing 37	6145	✓	✓		✓		OK	195 PSI	MS	28-5-25	
87	ACP-PFE-179		6147		✓		✓		OK	195 PSI	MS	28-5-25	
88	ACP-PFE-180	Ocean Wing 38	6148		✓		✓		OK	195 PSI	MS	28-5-25	
89	ACP-PFE-181		6149		✓		✓		OK	195 PSI	MS	28-5-25	
90	ACP-PFE-182	Ocean Wing 39	6200		✓		✓		OK	195 PSI	MS	28-5-25	
91	ACP-PFE-183		6202		✓		✓		OK	195 PSI	MS	28-5-25	
92	ACP-PFE-184	Ocean Wing 40	6203		✓		✓		OK	195 PSI	MS	28-5-25	
93	ACP-PFE-185		6205		✓		✓		OK	195 PSI	MS	28-5-25	
94	ACP-PFE-186	Ocean Wing 41	6206		✓		✓		OK	195 PSI	MS	28-5-25	
95	ACP-PFE-187		6208		✓		✓		OK	195 PSI	MS	28-5-25	
96	ACP-PFE-188	Ocean Wing 42	6209		✓		✓		OK	195 PSI	MS	28-5-25	
97	ACP-PFE-189		6211		✓		✓		OK	195 PSI	MS	28-5-25	



# Engineering Department

## FLS - 10 : Portable Fire Extinguishers

FLS 10-02 Record of monthly inspection of all Portable Fire Extinguishers.

Month: May Year: 2025

Item No.	FLS CODE	Area		Extinguisher (Dry chemical)							Checked by	Date	Remark
				Type of Chemical			Physical		Gauge				
		Section	Location	Dry	Halotron	Wet chemical	Normal	Abnormal	Status	Pressure			
98	ACP-PFE-190	Ocean Wing 43	6212		/		/		OK	195 PSI	NI	28-5-25	
99	ACP-PFE-191		6215		/		/		OK	195 PSI	NI	28-5-25	
100	ACP-PFE-192	Ocean Wing 44	6216		/		/		OK	195 PSI	NI	28-5-25	
101	ACP-PFE-193		6218		/		/		OK	195 PSI	NI	28-5-25	
102	ACP-PFE-194	Ocean Wing 45	6219		/		/		OK	195 PSI	NI	28-5-25	
103	ACP-PFE-195		6221		/		/		OK	195 PSI	NI	28-5-25	
104	ACP-PFE-196	Ocean Wing 46	6222		/		/		OK	195 PSI	NI	28-5-25	
105	ACP-PFE-197		6224		/		/		OK	195 PSI	NI	28-5-25	
106	ACP-PFE-198	Ocean Wing 47	6225		/		/		OK	195 PSI	NI	28-5-25	
107	ACP-PFE-199		6227		/		/		OK	195 PSI	NI	28-5-25	
108	ACP-PFE-200	Ocean Wing 48	6228		/		/		OK	195 PSI	NI	28-5-25	
109	ACP-PFE-201		6230		/		/		OK	195 PSI	NI	28-5-25	
110	ACP-PFE-202	Ocean Wing 49	6231		/		/		OK	195 PSI	NI	28-5-25	
111	ACP-PFE-203		6233		/		/		OK	195 PSI	NI	28-5-25	
112	ACP-PFE-204	Ocean Wing 50	6234	/			/		OK	195 PSI	NI	28-5-25	
113	ACP-PFE-205		6236	/			/		OK	195 PSI	NI	28-5-25	
114	ACP-PFE-206	ARP	Club Pakarang		/		/		OK	195 PSI	NI	28-5-25	
115	ACP-PFE-207	ARP	MDB 4		/		/		OK	195 PSI	NI	28-5-25	
116	ACP-PFE-208	ARP	Club Pakarang 1		/		/		OK	195 PSI	NI	28-5-25	
117	ACP-PFE-209	ARP	Club Pakarang 2		/		/		OK	195 PSI	NI	28-5-25	
118	ACP-PFE-210	ARP	C/P Kitchen		/		/		OK	195 PSI	NI	28-5-25	
119	ACP-PFE-211	ARP	C/P Kitchen		/		/		OK	195 PSI	NI	28-5-25	
120	ACP-PFE-212	ARP	EE-Pakarang		/		/		OK	195 PSI	NI	28-5-25	
121	ACP-PFE-213	ARP	H/K 2		/		/		OK	195 PSI	NI	28-5-25	
122	ACP-PFE-214	ARP	Fire pump1		/		/		OK	195 PSI	NI	28-5-25	



# Engineering Department

## FLS - 10 : Portable Fire Extinguishers

FLS 10-02 Record of monthly inspection of all Portable Fire Extinguishers.

Month: May Year: 2025

Item No.	FLS CODE	Area		Extinguisher (Dry chemical)							Checked by	Date	Remark
				Type of Chemical			Physical		Gauge				
		Section	Location	Dry	Halotron	Wet chemical	Normal	Abnormal	Status	Pressure			
123	ACP-PFE-215	ARP	Fire pump2		/		✓		OK	195 PSI	MS	28-5-25	
124	ACP-PFE-216	ARP	Genarator2		✓		✓		OK	195 PSI	MS	22-5-25	
125	ACP-PFE-217	ARP	MDB3		✓		✓		OK	195 PSI	MS	22-5-25	
126	ACP-PFE-218	ARP	Staff toilet A7	✓			✓		OK	195 PSI	MS	28-5-25	
127	ACP-PFE-219	ARP	Tranformer 4		/		✓		OK	195 PSI	MS	28-5-25	
128	ACP-PFE-220	ARP	Coral Kitchen				✓		OK	195 PSI	MS	22-5-25	
129	ACP-PFE-221	ARP	H/K1		✓		✓		OK	195 PSI	MS	22-5-25	
130	ACP-PFE-222	ARP	H/K3		/		✓		OK	195 PSI	MS	18-5-25	
131	ACP-PFE-223	ARP	H/K4		/		✓		OK	195 PSI	MS	28-5-25	
132	ACP-PFE-224	ARP	Fire Pump3		.	/	✓		OK	195 PSI	MS	28-5-25	

Acknowledge by: MS

Fire-Life Safety Teamleader

Approved by

Heads of Dep



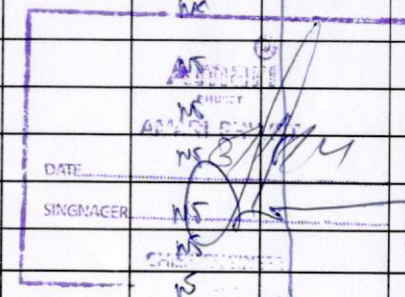
# Engineering Department

## FLS - 10 : Portable Fire Extinguishers

FLS 10-02 Record of monthly inspection of all Portable Fire Extinguishers.

Month: June Year: 2025

Item No.	FLS CODE	Area		Extinguisher (Dry chemical)							Checked by	Date	Remark
				Type of Chemical			Physical		Gauge				
		Section	Location	Dry	Halotron	Wet chemical	Normal	Abnormal	Status	Pressure			
1	ACP-PFE-093	Ocean Wing 1	6000		✓		/		/		WS	26-6-26	
2	ACP-PFE-094		6002		✓		/		/		WS	26-6-25	
3	ACP-PFE-095		6004		✓		/		/		WS	26-6-25	
4	ACP-PFE-096	Ocean Wing 2	6006		✓		/		/		WS	29-6-25	
5	ACP-PFE-097		6008		✓		/		/		WS	26-6-25	
6	ACP-PFE-098		6010		✓		/		/		WS	26-6-25	
7	ACP-PFE-099	Ocean Wing 3	6012		✓		/		/		WS	26-6-25	
8	ACP-PFE-100		6015		✓		/		/		WS	26-6-25	
9	ACP-PFE-101		6016		✓		/		/		WS	26-6-25	
10	ACP-PFE-102	Ocean Wing 4	6017		✓		/		/		WS	26-6-25	
11	ACP-PFE-103		6020		✓		/		/		WS	26-6-25	
12	ACP-PFE-104	Ocean Wing 5	6021		✓		/		/		WS		
13	ACP-PFE-105		6023		✓		/		/		WS		
14	ACP-PFE-106	Ocean Wing 6	6024		✓		/		/		WS		
15	ACP-PFE-107		6026		✓		/		/		WS		
16	ACP-PFE-108	Ocean Wing 7	6028		✓		/		/		WS	26-6-25	
17	ACP-PFE-109		6031		✓		/		/		WS		
18	ACP-PFE-110	Ocean Wing 8	6032		✓		/		/		WS		
19	ACP-PFE-111		6035		/		/		/		WS		
20	ACP-PFE-112	Ocean Wing 9	6036		/		/		/		WS		
21	ACP-PFE-113		6038		/		/		/		WS		
22	ACP-PFE-114		6040		/		/		/		WS		
23	ACP-PFE-0115	Ocean Wing 10	6042		✓		/		/		WS		
24	ACP-PFE-0116		6044		✓		/		/		WS		





# Engineering Department

## FLS - 10 : Portable Fire Extinguishers

FLS 10-02 Record of monthly inspection of all Portable Fire Extinguishers.

Month: June Year: 2025

Item No.	FLS CODE	Area		Extinguisher (Dry chemical)							Checked by	Date	Remark
				Type of Chemical			Physical		Gauge				
		Section	Location	Dry	Halotron	Wet chemical	Normal	Abnormal	Status	Pressure			
25	ACP-PFE-0117	Ocean Wing 11	6046		✓		/		✓		Mb	27-6-25	
26	ACP-PFE-0118		6048		✓		/		✓		Mb	27-6-25	
27	ACP-PFE-0119		6050		✓		/		✓		Mb	27-6-25	
28	ACP-PFE-0120		6052		✓		/		✓		Mb	27-6-25	
29	ACP-PFE-0121	Ocean Wing 12	6053		✓		/		✓		Mb	27-6-25	
30	ACP-PFE-0122		6055		✓		/		✓		Mb	27-6-25	
31	ACP-PFE-0123		6057		✓		/		✓		Mb	27-6-25	
32	ACP-PFE-0124	Ocean Wing 13	6058		✓		/		✓		Mb	27-6-25	
33	ACP-PFE-0125		6060		✓		/		✓		Mb	27-6-25	
34	ACP-PFE-0126		6062		✓		/		✓		Mb	27-6-25	
35	ACP-PFE-0127	Ocean Wing 14	6063		✓		/		✓		Mb	27-6-25	
36	ACP-PFE-0128		6066		✓		/		✓		Mb	27-6-25	
37	ACP-PFE-0129	Ocean Wing 15	6067		✓		/		✓		Mb	27-6-25	
38	ACP-PFE-0130		6069		✓		/		✓		Mb	27-6-25	
39	ACP-PFE-0131	Ocean Wing 16	6071		✓		/		✓		Mb	27-6-25	
40	ACP-PFE-0132		6073		✓		/		✓		Mb	27-6-25	
41	ACP-PFE-0133	Ocean Wing 17	6075		✗		/		✓		Mb	27-6-25	
42	ACP-PFE-0134		6077		✓		/		✓		Mb	27-6-25	
43	ACP-PFE-0135	Ocean Wing 18	6079		✓		/		✓		Mb	27-6-25	
44	ACP-PFE-0136		6081		✓		/		✓		Mb	27-6-25	
45	ACP-PFE-0137	Ocean Wing 19	6083		✓		/		✓		Mb	27-6-25	
46	ACP-PFE-0138		6085		✓		/		✓		Mb	27-6-25	
47	ACP-PFE-0139		6086		✓		/		✓		Mb	27-6-25	
48	ACP-PFE-0140	Ocean Wing 20	6087		✓		/		✓		Mb	27-6-25	
49	ACP-PFE-0141		6089		✓		/		✓		Mb	27-6-25	



# Engineering Department

## FLS - 10 : Portable Fire Extinguishers

FLS 10-02 Record of monthly inspection of all Portable Fire Extinguishers.

Month: June Year: 2023

Item No.	FLS CODE	Area		Extinguisher (Dry chemical)							Checked by	Date	Remark
				Type of Chemical			Physical		Gauge				
		Section	Location	Dry	Halotron	Wet chemical	Normal	Abnormal	Status	Pressure			
50	ACP-PFE-0142	Ocean Wing 21	6090		✓		/		✓		NS	28-6-25	
51	ACP-PFE-143		6091		✓		/		✓		NS	28-6-25	
52	ACP-PFE-144		6093		✓		/		✓		NS	28-6-25	
53	ACP-PFE-145		6096		✓		/		✓		NS	28-6-25	
54	ACP-PFE-146	Ocean Wing 22	6097		✓		/		✓		NS	28-6-25	
55	ACP-PFE-147		6099		✓		/		✓		NS	28-6-25	
56	ACP-PFE-148		6101		✓		/		✓		NS	28-6-25	
57	ACP-PFE-149	Ocean Wing 23	6103		✓		/		✓		NS	28-6-25	
58	ACP-PFE-150		6105		✓		/		✓		NS	28-6-25	
59	ACP-PFE-151		6107		✓		/		✓		NS	28-6-25	
60	ACP-PFE-152	Ocean Wing 24	6109		✓		/		✓		NS	28-6-25	
61	ACP-PFE-153		6112		✓		/		✓		NS	28-6-25	
62	ACP-PFE-154	Ocean Wing 25	6114		✓		/		✓		NS	28-6-25	
63	ACP-PFE-155		6116		✓		/		✓		NS	28-6-25	
64	ACP-PFE-156	Ocean Wing 26	6118		✓		/		✓		NS	28-6-25	
65	ACP-PFE-157		6120		✓		/		✓		NS	28-6-25	
66	ACP-PFE-158	Ocean Wing 27	6121		✓		/		✓		NS	28-6-25	
67	ACP-PFE-159		6123		✓		/		✓		NS	28-6-25	
68	ACP-PFE-160	Ocean Wing 28	6124		✓		/		✓		NS	28-6-25	
69	ACP-PFE-161		6126		✓		/		✓		NS	28-6-25	
70	ACP-PFE-162	Ocean Wing 29	6127	✓	-		/		✓		NS	28-6-25	
71	ACP-PFE-163		6128		✓		/		✓		NS	28-6-25	
72	ACP-PFE-164	Ocean Wing 30	6129		✓		/		✓		NS	28-6-25	
73	ACP-PFE-165		6130		✓		/		✓				



# Engineering Department

## FLS - 10 : Portable Fire Extinguishers

FLS 10-02 Record of monthly inspection of all Portable Fire Extinguishers.

Month: June Year: 2025

Item No.	FLS CODE	Area		Extinguisher (Dry chemical)							Checked by	Date	Remark
				Type of Chemical			Physical		Gauge				
		Section	Location	Dry	Halotron	Wet chemical	Normal	Abnormal	Status	Pressure			
74	ACP-PFE-166	Ocean Wing 31	6131		✓		/		✓		ns	28-6-25	
75	ACP-PFE-167		6132		✓		/		✓		ns	28-6-25	
76	ACP-PFE-168	Ocean Wing 32	6133		✓		/		✓		ns	28-6-25	
77	ACP-PFE-169		6134		✓		/		✓		ns	28-6-25	
78	ACP-PFE-170	Ocean Wing 33	6135		✓		/		✓		ns	28-6-25	
79	ACP-PFE-171		6136		✓		/		✓		ns	28-6-25	
80	ACP-PFE-172	Ocean Wing 34	6137		✓		/		✓		ns	28-6-25	
81	ACP-PFE-173		6138		✓		/		✓		ns	28-6-25	
82	ACP-PFE-174	Ocean Wing 35	6139		✓		/		✓		ns	28-6-25	
83	ACP-PFE-175		6141		✓		/		✓		ns	28-6-25	
84	ACP-PFE-176	Ocean Wing 36	6142		✓		/		✓		ns	28-6-25	
85	ACP-PFE-177		6144		✓		/		✓		ns	28-6-25	
86	ACP-PFE-178	Ocean Wing 37	6145	✓	✗		/		✓		ns	28-6-25	
87	ACP-PFE-179		6147		✓		/		✓		ns	28-6-25	
88	ACP-PFE-180	Ocean Wing 38	6148		✓		/		✓		ns	28-6-25	
89	ACP-PFE-181		6149		✓		/		✓		ns	28-6-25	
90	ACP-PFE-182	Ocean Wing 39	6200		✓		/		✓		ns	28-6-25	
91	ACP-PFE-183		6202		✓		/		✓		ns	28-6-25	
92	ACP-PFE-184	Ocean Wing 40	6203		✓		/		✓		ns	28-6-25	
93	ACP-PFE-185		6205		✓		/		✓		ns	28-6-25	
94	ACP-PFE-186	Ocean Wing 41	6206		✓		/		✓		ns	28-6-25	
95	ACP-PFE-187		6208		✓		/		✓		ns	28-6-25	
96	ACP-PFE-188	Ocean Wing 42	6209		✓		/		✓		ns	28-6-25	
97	ACP-PFE-189		6211		✓		/		✓		ns		



# Engineering Department

## FLS - 10 : Portable Fire Extinguishers

FLS 10-02 Record of monthly inspection of all Portable Fire Extinguishers.

Month: June Year: 2018

Item No.	FLS CODE	Area		Extinguisher (Dry chemical)							Checked by	Date	Remark
				Type of Chemical			Physical		Gauge				
		Section	Location	Dry	Halotron	Wet chemical	Normal	Abnormal	Status	Pressure			
98	ACP-PFE-190	Ocean Wing 43	6212		✓		/		/		WS	25-6-25	
99	ACP-PFE-191		6215		✓		/		/		WS		
100	ACP-PFE-192	Ocean Wing 44	6216		✓		/		/		WS		
101	ACP-PFE-193		6218		✓		/		/		WS		
102	ACP-PFE-194	Ocean Wing 45	6219		✓		/		/		WS		
103	ACP-PFE-195		6221		✓		/		/		WS		
104	ACP-PFE-196	Ocean Wing 46	6222		✓		/		/		WS		
105	ACP-PFE-197		6224		✓		/		/		WS		
106	ACP-PFE-198	Ocean Wing 47	6225		✓		/		/		WS		
107	ACP-PFE-199		6227		/		/		/		WS		
108	ACP-PFE-200	Ocean Wing 48	6228		✓		/		/		WS		
109	ACP-PFE-201		6230		✓		/		/		WS		
110	ACP-PFE-202	Ocean Wing 49	6231		✓		/		/		WS		
111	ACP-PFE-203		6233		✓		/		/		WS		
112	ACP-PFE-204	Ocean Wing 50	6234	✓			✓		/		WS		
113	ACP-PFE-205		6236	✓			/		/		WS		
114	ACP-PFE-206	ARP	Club Pakarang		✓		/		✓		WS		
115	ACP-PFE-207	ARP	MDB 4		✓		/		/		WS		
116	ACP-PFE-208	ARP	Club Pakarang 1		✓		/		/		WS		
117	ACP-PFE-209	ARP	Club Pakarang 2		✓		/		/		WS		
118	ACP-PFE-210	ARP	C/P Kitchen		✓		/		/		WS		
119	ACP-PFE-211	ARP	C/P Kitchen		✓		/		/		WS		
120	ACP-PFE-212	ARP	EE-Pakarang		✓		/		/		WS		
121	ACP-PFE-213	ARP	H/K 2		✓		✓		/		WS	25-6-25	
122	ACP-PFE-214	ARP	Fire pump1		✓		/		/		WS	25-6-25	



# Engineering Department

## FLS - 10 : Portable Fire Extinguishers

FLS 10-02 Record of monthly inspection of all Portable Fire Extinguishers.

Month: June Year: 2023

Item No.	FLS CODE	Area		Extinguisher (Dry chemical)							Checked by	Date	Remark
				Type of Chemical			Physical		Gauge				
		Section	Location	Dry	Halotron	Wet chemical	Normal	Abnormal	Status	Pressure			
123	ACP-PFE-215	ARP	Fire pump2		✓		/		/		WS	25-6-22	
124	ACP-PFE-216	ARP	Genarator2		✓		/		/		WS	26-6-22	
125	ACP-PFE-217	ARP	MDB3		✓		/		/		WS	26-6-22	
126	ACP-PFE-218	ARP	Staff toilet A7	✓	✗	✗	/		/		WS	26-6-22	
127	ACP-PFE-219	ARP	Tranformer 4	✓	✗	✗	/		/		WS	26-6-22	
128	ACP-PFE-220	ARP	Coral Kitchen		✓		/		/		WS	26-6-22	
129	ACP-PFE-221	ARP	H/K1		✓		/		/		WS	26-6-22	
130	ACP-PFE-222	ARP	H/K3		✓		/		/		WS	26-6-22	
131	ACP-PFE-223	ARP	H/K4		✓		/		/		WS	25-6-22	
132	ACP-PFE-224	ARP	Fire Pump3		✗	✓	/		/		WS	25-6-22	

Acknowledge by: .....

Fire-Life Safety Teamleader

Approved by: .....

Heads of Department



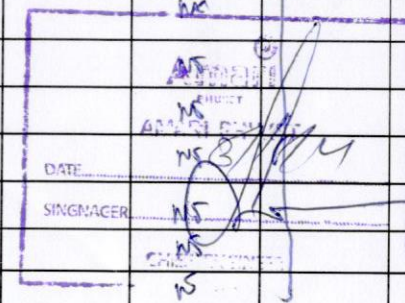
# Engineering Department

## FLS - 10 : Portable Fire Extinguishers

FLS 10-02 Record of monthly inspection of all Portable Fire Extinguishers.

Month: June Year: 2025

Item No.	FLS CODE	Area		Extinguisher (Dry chemical)							Checked by	Date	Remark
				Type of Chemical			Physical		Gauge				
		Section	Location	Dry	Halotron	Wet chemical	Normal	Abnormal	Status	Pressure			
1	ACP-PFE-093	Ocean Wing 1	6000		✓		/		/		WS	26-6-26	
2	ACP-PFE-094		6002		✓		/		/		WS	26-6-25	
3	ACP-PFE-095		6004		✓		/		/		WS	26-6-25	
4	ACP-PFE-096	Ocean Wing 2	6006		✓		/		/		WS	29-6-25	
5	ACP-PFE-097		6008		✓		/		/		WS	26-6-25	
6	ACP-PFE-098		6010		✓		/		/		WS	26-6-25	
7	ACP-PFE-099	Ocean Wing 3	6012		✓		/		/		WS	26-6-25	
8	ACP-PFE-100		6015		✓		/		/		WS	26-6-25	
9	ACP-PFE-101		6016		✓		/		/		WS	26-6-25	
10	ACP-PFE-102	Ocean Wing 4	6017		✓		/		/		WS	26-6-25	
11	ACP-PFE-103		6020		✓		/		/		WS	26-6-25	
12	ACP-PFE-104	Ocean Wing 5	6021		✓		/		/		WS		
13	ACP-PFE-105		6023		✓		/		/		WS		
14	ACP-PFE-106	Ocean Wing 6	6024		✓		/		/		WS		
15	ACP-PFE-107		6026		✓		/		/		WS		
16	ACP-PFE-108	Ocean Wing 7	6028		✓		/		/		WS	26-6-25	
17	ACP-PFE-109		6031		✓		/		/		WS		
18	ACP-PFE-110	Ocean Wing 8	6032		✓		/		/		WS		
19	ACP-PFE-111		6035		/		/		/		WS		
20	ACP-PFE-112	Ocean Wing 9	6036		/		/		/		WS		
21	ACP-PFE-113		6038		/		/		/		WS		
22	ACP-PFE-114		6040		/		/		/		WS		
23	ACP-PFE-0115	Ocean Wing 10	6042		✓		/		/		WS		
24	ACP-PFE-0116		6044		✓		/		/		WS		





# Engineering Department

## FLS - 10 : Portable Fire Extinguishers

FLS 10-02 Record of monthly inspection of all Portable Fire Extinguishers.

Month: June Year: 2025

Item No.	FLS CODE	Area		Extinguisher (Dry chemical)							Checked by	Date	Remark
				Type of Chemical			Physical		Gauge				
		Section	Location	Dry	Halotron	Wet chemical	Normal	Abnormal	Status	Pressure			
25	ACP-PFE-0117	Ocean Wing 11	6046		✓		/		✓		Mb	27-6-25	
26	ACP-PFE-0118		6048		✓		/		✓		Mb	27-6-25	
27	ACP-PFE-0119		6050		✓		/		✓		Mb	27-6-25	
28	ACP-PFE-0120		6052		✓		/		✓		Mb	27-6-25	
29	ACP-PFE-0121	Ocean Wing 12	6053		✓		/		✓		Mb	27-6-25	
30	ACP-PFE-0122		6055		✓		/		✓		Mb	27-6-25	
31	ACP-PFE-0123		6057		✓		/		✓		Mb	27-6-25	
32	ACP-PFE-0124	Ocean Wing 13	6058		✓		/		✓		Mb	27-6-25	
33	ACP-PFE-0125		6060		✓		/		✓		Mb	27-6-25	
34	ACP-PFE-0126		6062		✓		/		✓		Mb	27-6-25	
35	ACP-PFE-0127	Ocean Wing 14	6063		✓		/		✓		Mb	27-6-25	
36	ACP-PFE-0128		6066		✓		/		✓		Mb	27-6-25	
37	ACP-PFE-0129	Ocean Wing 15	6067		✓		/		✓		Mb	27-6-25	
38	ACP-PFE-0130		6069		✓		/		✓		Mb	27-6-25	
39	ACP-PFE-0131	Ocean Wing 16	6071		✓		/		✓		Mb	27-6-25	
40	ACP-PFE-0132		6073		✓		/		✓		Mb	27-6-25	
41	ACP-PFE-0133	Ocean Wing 17	6075		✗		/		✓		Mb	27-6-25	
42	ACP-PFE-0134		6077		✓		/		✓		Mb	27-6-25	
43	ACP-PFE-0135	Ocean Wing 18	6079		✓		/		✓		Mb	27-6-25	
44	ACP-PFE-0136		6081		✓		/		✓		Mb	27-6-25	
45	ACP-PFE-0137	Ocean Wing 19	6083		✓		/		✓		Mb	27-6-25	
46	ACP-PFE-0138		6085		✓		/		✓		Mb	27-6-25	
47	ACP-PFE-0139		6086		✓		/		✓		Mb	27-6-25	
48	ACP-PFE-0140	Ocean Wing 20	6087		✓		/		✓		Mb	27-6-25	
49	ACP-PFE-0141		6089		✓		/		✓		Mb	27-6-25	



# Engineering Department

## FLS - 10 : Portable Fire Extinguishers

FLS 10-02 Record of monthly inspection of all Portable Fire Extinguishers.

Month: June Year: 2023

Item No.	FLS CODE	Area		Extinguisher (Dry chemical)							Checked by	Date	Remark
				Type of Chemical			Physical		Gauge				
		Section	Location	Dry	Halotron	Wet chemical	Normal	Abnormal	Status	Pressure			
50	ACP-PFE-0142	Ocean Wing 21	6090		✓		/		✓		NS	28-6-25	
51	ACP-PFE-143		6091		✓		/		✓		NS	28-6-25	
52	ACP-PFE-144		6093		✓		/		✓		NS	28-6-25	
53	ACP-PFE-145		6096		✓		/		✓		NS	28-6-25	
54	ACP-PFE-146	Ocean Wing 22	6097		✓		/		✓		NS	28-6-25	
55	ACP-PFE-147		6099		✓		/		✓		NS	28-6-25	
56	ACP-PFE-148		6101		✓		/		✓		NS	28-6-25	
57	ACP-PFE-149	Ocean Wing 23	6103		✓		/		✓		NS	28-6-25	
58	ACP-PFE-150		6105		✓		/		✓		NS	28-6-25	
59	ACP-PFE-151		6107		✓		/		✓		NS	28-6-25	
60	ACP-PFE-152	Ocean Wing 24	6109		✓		/		✓		NS	28-6-25	
61	ACP-PFE-153		6112		✓		/		✓		NS	28-6-25	
62	ACP-PFE-154	Ocean Wing 25	6114		✓		/		✓		NS	28-6-25	
63	ACP-PFE-155		6116		✓		/		✓		NS	28-6-25	
64	ACP-PFE-156	Ocean Wing 26	6118		✓		/		✓		NS	28-6-25	
65	ACP-PFE-157		6120		✓		/		✓		NS	28-6-25	
66	ACP-PFE-158	Ocean Wing 27	6121		✓		/		✓		NS	28-6-25	
67	ACP-PFE-159		6123		✓		/		✓		NS	28-6-25	
68	ACP-PFE-160	Ocean Wing 28	6124		✓		/		✓		NS	28-6-25	
69	ACP-PFE-161		6126		✓		/		✓		NS	28-6-25	
70	ACP-PFE-162	Ocean Wing 29	6127	✓	-		/		✓		NS	28-6-25	
71	ACP-PFE-163		6128		✓		/		✓		NS	28-6-25	
72	ACP-PFE-164	Ocean Wing 30	6129		✓		/		✓		NS	28-6-25	
73	ACP-PFE-165		6130		✓		/		✓				



# Engineering Department

## FLS - 10 : Portable Fire Extinguishers

FLS 10-02 Record of monthly inspection of all Portable Fire Extinguishers.

Month: June Year: 2025

Item No.	FLS CODE	Area		Extinguisher (Dry chemical)							Checked by	Date	Remark
				Type of Chemical			Physical		Gauge				
		Section	Location	Dry	Halotron	Wet chemical	Normal	Abnormal	Status	Pressure			
74	ACP-PFE-166	Ocean Wing 31	6131		✓		/		✓		NS	28-6-25	
75	ACP-PFE-167		6132		✓		/		✓		NS	28-6-25	
76	ACP-PFE-168	Ocean Wing 32	6133		✓		/		✓		NS	28-6-25	
77	ACP-PFE-169		6134		✓		/		✓		NS	28-6-25	
78	ACP-PFE-170	Ocean Wing 33	6135		✓		/		✓		NS	28-6-25	
79	ACP-PFE-171		6136		✓		/		✓		NS	28-6-25	
80	ACP-PFE-172	Ocean Wing 34	6137		✓		/		✓		NS	28-6-25	
81	ACP-PFE-173		6138		✓		/		✓		NS	28-6-25	
82	ACP-PFE-174	Ocean Wing 35	6139		✓		/		✓		NS	28-6-25	
83	ACP-PFE-175		6141		/		/		✓		NS	28-6-25	
84	ACP-PFE-176	Ocean Wing 36	6142		✓		/		✓		NS	28-6-25	
85	ACP-PFE-177		6144		/		/		✓		NS	28-6-25	
86	ACP-PFE-178	Ocean Wing 37	6145	✓	<del>✓</del>		/		✓		NS	28-6-25	
87	ACP-PFE-179		6147		✓		/		✓		NS	28-6-25	
88	ACP-PFE-180	Ocean Wing 38	6148		✓		/		✓		NS	28-6-25	
89	ACP-PFE-181		6149		✓		/		✓		NS	28-6-25	
90	ACP-PFE-182	Ocean Wing 39	6200		✓		/		✓		NS	28-6-25	
91	ACP-PFE-183		6202		✓		/		✓		NS	28-6-25	
92	ACP-PFE-184	Ocean Wing 40	6203		✓		/		✓		NS	28-6-25	
93	ACP-PFE-185		6205		✓		/		✓		NS	28-6-25	
94	ACP-PFE-186	Ocean Wing 41	6206		✓		/		✓		NS	28-6-25	
95	ACP-PFE-187		6208		✓		/		✓		NS	28-6-25	
96	ACP-PFE-188	Ocean Wing 42	6209		✓		/		✓		NS	28-6-25	
97	ACP-PFE-189		6211		✓		/		✓		NS		



# Engineering Department

## FLS - 10 : Portable Fire Extinguishers

FLS 10-02 Record of monthly inspection of all Portable Fire Extinguishers.

Month: June Year: 2018

Item No.	FLS CODE	Area		Extinguisher (Dry chemical)							Checked by	Date	Remark
				Type of Chemical			Physical		Gauge				
		Section	Location	Dry	Halotron	Wet chemical	Normal	Abnormal	Status	Pressure			
98	ACP-PFE-190	Ocean Wing 43	6212		✓		/		/		WS	25-6-25	
99	ACP-PFE-191		6215		✓		/		/		WS		
100	ACP-PFE-192	Ocean Wing 44	6216		✓		/		/		WS		
101	ACP-PFE-193		6218		✓		/		/		WS		
102	ACP-PFE-194	Ocean Wing 45	6219		✓		/		/		WS		
103	ACP-PFE-195		6221		✓		/		/		WS		
104	ACP-PFE-196	Ocean Wing 46	6222		✓		/		/		WS		
105	ACP-PFE-197		6224		✓		/		/		WS		
106	ACP-PFE-198	Ocean Wing 47	6225		✓		/		/		WS	25-6-25	
107	ACP-PFE-199		6227		/		/		/		WS		
108	ACP-PFE-200	Ocean Wing 48	6228		✓		/		/		WS		
109	ACP-PFE-201		6230		✓		/		/		WS		
110	ACP-PFE-202	Ocean Wing 49	6231		✓		/		/		WS		
111	ACP-PFE-203		6233		✓		/		/		WS		
112	ACP-PFE-204	Ocean Wing 50	6234	✓			/		/		WS		
113	ACP-PFE-205		6236	✓			/		/		WS		
114	ACP-PFE-206	ARP	Club Pakarang		✓		/		✓		WS		
115	ACP-PFE-207	ARP	MDB 4		✓		/		/		WS		
116	ACP-PFE-208	ARP	Club Pakarang 1		✓		/		/		WS		
117	ACP-PFE-209	ARP	Club Pakarang 2		✓		/		/		WS		
118	ACP-PFE-210	ARP	C/P Kitchen		✓		/		/		WS		
119	ACP-PFE-211	ARP	C/P Kitchen		✓		/		/		WS		
120	ACP-PFE-212	ARP	EE-Pakarang		✓		/		/		WS		
121	ACP-PFE-213	ARP	H/K 2		✓		/		/		WS	25-6-25	
122	ACP-PFE-214	ARP	Fire pump1		✓		/		/		WS	25-6-25	



# Engineering Department

## FLS - 10 : Portable Fire Extinguishers

FLS 10-02 Record of monthly inspection of all Portable Fire Extinguishers.

Month: June Year: 2023

Item No.	FLS CODE	Area		Extinguisher (Dry chemical)							Checked by	Date	Remark
				Type of Chemical			Physical		Gauge				
		Section	Location	Dry	Halotron	Wet chemical	Normal	Abnormal	Status	Pressure			
123	ACP-PFE-215	ARP	Fire pump2		✓		/		/		WS	25-6-23	
124	ACP-PFE-216	ARP	Genarator2		✓		/		/		WS	26-6-23	
125	ACP-PFE-217	ARP	MDB3		✓		/		/		WS	26-6-23	
126	ACP-PFE-218	ARP	Staff toilet A7	✓	✗	✗	/		/		WS	26-6-23	
127	ACP-PFE-219	ARP	Tranformer 4	✓	✗	✗	/		/		WS	26-6-23	
128	ACP-PFE-220	ARP	Coral Kitchen		✓		/		/		WS	26-6-23	
129	ACP-PFE-221	ARP	H/K1		✓		/		/		WS	26-6-23	
130	ACP-PFE-222	ARP	H/K3		✓		/		/		WS	26-6-23	
131	ACP-PFE-223	ARP	H/K4		✓		/		/		WS	25-6-23	
132	ACP-PFE-224	ARP	Fire Pump3		✗	✓	/		/		WS	25-6-23	

Acknowledge by: .....

Fire-Life Safety Teamleader

Approved by: .....

Heads of Department



## ภาคผนวกที่ 8

แบบบันทึกการตรวจสอบระบบบำบัดน้ำเสีย (แบบ ทส.1)



ระบบบำบัดน้ำเสียแบบแอคทีฟเวทิตสไลด์(Activated Sludge)

สถิติและข้อมูลที่เกิดขึ้นจากโรงแรมอมารี ภูเก็ต																	
วัน เดือน ปี	ปริมาณการใช้ไฟฟ้าของระบบบำบัดน้ำเสีย (หน่วย)	ปริมาณการใช้น้ำในทุกกิจกรรมของแหล่งกำเนิดมลพิษ(ลบ.ม.)	ปริมาณน้ำเสียที่เข้าระบบบำบัดน้ำเสีย (ลบ.ม.)	การระบายน้ำทิ้งจากระบบบำบัดน้ำเสีย (ระบาย/ไม่ระบาย)	การทำงานของระบบบำบัดน้ำเสีย							ปริมาณเชื้อในบ่อกเพาะเชื้อ (ลบ.ม./วัน)	ACP		ARP	ปัญหาอุปสรรคและแนวทางแก้ไข	ลายมือชื่อผู้บันทึก
					ระบบบำบัดน้ำเสีย(ปกติ/ผิดปกติ)	เครื่องสูบน้ำ(ปกติ/ผิดปกติ)	เครื่องเติมอากาศ(ปกติ/ผิดปกติ)	เครื่องฟัดคลอรีน 10 เปอร์เซ็นต์(ปกติ/ผิดปกติ)	หัวจ่ายอากาศ(ปกติ/ผิดปกติ)	เครื่องสูบลตะกอน(ปกติ/ผิดปกติ)	สีของเชื้อจุลินทรีย์สีน้ำตาล(ปกติ/ผิดปกติ)		ค่าจุลินทรีย์ในระบบ (SV30)				
1/1/25	6200	130	284	มี	ปกติ	ปกติ	ปกติ	ปกติ	ปกติ	ปกติ	ปกติ	1	700	600	1		
2	6403	129	262.2	มี	ปกติ	ปกติ	ปกติ	ปกติ	ปกติ	ปกติ	ปกติ	1	700	600	1		
3	6406	1249	120.7	มี	ปกติ	ปกติ	ปกติ	ปกติ	ปกติ	ปกติ	ปกติ	1	700	600	1		
4	6409	277	245	มี	ปกติ	ปกติ	ปกติ	ปกติ	ปกติ	ปกติ	ปกติ	1	700	600	1		
5	6411	127	160	มี	ปกติ	ปกติ	ปกติ	ปกติ	ปกติ	ปกติ	ปกติ	1	700	600	1		
6	6414	182	130	มี	ปกติ	ปกติ	ปกติ	ปกติ	ปกติ	ปกติ	ปกติ	1	750	200	1		
7	6417	210	200	มี	ปกติ	ปกติ	ปกติ	ปกติ	ปกติ	ปกติ	ปกติ	1	750	200	1		
8	6421	130	110	มี	ปกติ	ปกติ	ปกติ	ปกติ	ปกติ	ปกติ	ปกติ	1	750	200	1		
9	6424	150	120	มี	ปกติ	ปกติ	ปกติ	ปกติ	ปกติ	ปกติ	ปกติ	1	750	200	1		
10	6427	187	250	มี	ปกติ	ปกติ	ปกติ	ปกติ	ปกติ	ปกติ	ปกติ	1	750	200	1		
11	6430	820	300	มี	ปกติ	ปกติ	ปกติ	ปกติ	ปกติ	ปกติ	ปกติ	1	800	750	1		
12	6433	401	450	มี	ปกติ	ปกติ	ปกติ	ปกติ	ปกติ	ปกติ	ปกติ	1	800	750	1		
13	6436	659	300	มี	ปกติ	ปกติ	ปกติ	ปกติ	ปกติ	ปกติ	ปกติ	1	800	750	1		
14	6439	110	240	มี	ปกติ	ปกติ	ปกติ	ปกติ	ปกติ	ปกติ	ปกติ	1	800	750	1		
15	6442	187	250	มี	ปกติ	ปกติ	ปกติ	ปกติ	ปกติ	ปกติ	ปกติ	1	750	700	1		
16	6445	326	297	มี	ปกติ	ปกติ	ปกติ	ปกติ	ปกติ	ปกติ	ปกติ	1	750	700	1		
17	6448	136	210	มี	ปกติ	ปกติ	ปกติ	ปกติ	ปกติ	ปกติ	ปกติ	1	750	700	1		
18	6451	211	170	มี	ปกติ	ปกติ	ปกติ	ปกติ	ปกติ	ปกติ	ปกติ	1	750	800	1		
19	6454	327	295	มี	ปกติ	ปกติ	ปกติ	ปกติ	ปกติ	ปกติ	ปกติ	1	750	800	1		
20	6456	126	230	มี	ปกติ	ปกติ	ปกติ	ปกติ	ปกติ	ปกติ	ปกติ	1	700	800	1		
21	6457	127	240	มี	ปกติ	ปกติ	ปกติ	ปกติ	ปกติ	ปกติ	ปกติ	1	700	800	1		
22	6459	127	180	มี	ปกติ	ปกติ	ปกติ	ปกติ	ปกติ	ปกติ	ปกติ	1	700	700	1		
23	6460	127	251	มี	ปกติ	ปกติ	ปกติ	ปกติ	ปกติ	ปกติ	ปกติ	1	700	700	1		
24	6451	251	200	มี	ปกติ	ปกติ	ปกติ	ปกติ	ปกติ	ปกติ	ปกติ	1	800	700	1		
25	6450	260	146	มี	ปกติ	ปกติ	ปกติ	ปกติ	ปกติ	ปกติ	ปกติ	1	800	700	1		
26	6458	282	206	มี	ปกติ	ปกติ	ปกติ	ปกติ	ปกติ	ปกติ	ปกติ	1	800	700	1		
27	6455	342	187	มี	ปกติ	ปกติ	ปกติ	ปกติ	ปกติ	ปกติ	ปกติ	1	800	700	1		
28	6458	272	287	มี	ปกติ	ปกติ	ปกติ	ปกติ	ปกติ	ปกติ	ปกติ	1	800	750	1		
29	6460	299	167	มี	ปกติ	ปกติ	ปกติ	ปกติ	ปกติ	ปกติ	ปกติ	1	750	750	1		
30	6463	206	206	มี	ปกติ	ปกติ	ปกติ	ปกติ	ปกติ	ปกติ	ปกติ	1	750	750	1		
31	6466	300	280	มี	ปกติ	ปกติ	ปกติ	ปกติ	ปกติ	ปกติ	ปกติ	1	750	750	1		

SAKUNTHA



ระบบน้ำเสียแบบแอคทีฟเต็ดสลัดจ์(Activated Sludge)

สถิติและข้อมูลที่เกี่ยวข้องจากโรงเรือนมารี กูเก็ด																	
วัน เดือน ปี	ปริมาณการ ใช้ไฟฟ้าของ ระบบบำบัด น้ำเสีย (หน่วย)	ปริมาณการ ใช้ไฟฟ้าในทุ กิจกรรมของ แหล่งกำเนิด มลพิษ(ลบ.ม.)	ปริมาณน้ำ เสียที่เข้า ระบบบำบัดน้ำ เสีย (ลบ.ม.)	การระบาย น้ำทิ้งจาก ระบบ บำบัดน้ำ เสีย (ระบาย/ไม่ ระบาย)	การทำงานของระบบบำบัดน้ำเสีย							ปริมาณ เชื้อเพลิง เพาะเชื้อ (ลบ.ม./วัน)	ACP		ปัญหาอุปสรรคและ แนวทางแก้ไข	ลายมือชื่อผู้ บันทึก	
					ระบบ บำบัดน้ำ เสีย(ปกติ/ ผิดปกติ)	เครื่อง สูบน้ำ (ปกติ/ ผิดปกติ)	เครื่อง เติม อากาศ (ปกติ/ ผิดปกติ)	เครื่องฟัด คลอรีน 10 เปอร์เซ็นต์ (ปกติ/ ผิดปกติ)	ท่อบาง อากาศ (ปกติ/ ผิดปกติ)	เครื่องสูบ ตะกอน (ปกติ/ ผิดปกติ)	สิ่งของ เชื้อ จุลินทรีย์ สีน้ำตาล (ปกติ/ ผิดปกติ)		ค่าจุลินทรีย์ในระบบ (SV30)	ARP			
Feb 2015																	
1	6469	293.4	234.9	-	/	/	/	/	/	/	/	-	800	220	7/1/2556		
2	6472	308.1	246.5	-	/	/	/	/	/	/	/	-	805	220	7/1/2556		
3	6475	306.5	245.2	-	/	/	/	/	/	/	/	-	810	220	7/1/2556		
4	6478	312.3	249.8	-	/	/	/	/	/	/	/	-	990	230	7/1/2556		
5	6481	303.2	242.6	-	/	/	/	/	/	/	/	-	970	235	7/1/2556		
6	6484	299.5	238	-	/	/	/	/	/	/	/	-	980	205	7/1/2556		
7	6487	294.8	235.8	-	/	/	/	/	/	/	/	-	980	200	7/1/2556		
8	6490	301.7	241.36	-	/	/	/	/	/	/	/	-	950	200	7/1/2556		
9	6493	314	251.2	-	/	/	/	/	/	/	/	-	960	190	7/1/2556		
10	6496	310.9	248.64	-	/	/	/	/	/	/	/	-	960	190	7/1/2556		
11	6499	321.3	259.4	-	/	/	/	/	/	/	/	-	940	180	7/1/2556		
12	6503	327.3	261.8	-	/	/	/	/	/	/	/	-	940	180	7/1/2556		
13	6507	329.2	263.36	-	/	/	/	/	/	/	/	-	920	190	-		
14	6510	320	256	-	/	/	/	/	/	/	/	-	920	190	-		
15	6513	312.3	249.8	-	/	/	/	/	/	/	/	-	900	190	-		
16	6516	322	259.6	-	/	/	/	/	/	/	/	-	680	190	7/1/2556		
17	6520	324.2	259.3	-	/	/	/	/	/	/	/	-	660	150	7/1/2556		
18	6523	318.9	254.6	-	/	/	/	/	/	/	/	-	660	150	-		
19	6526	316.4	253.12	-	/	/	/	/	/	/	/	-	650	160	7/1/2556		
20	6529	319.8	255.8	-	/	/	/	/	/	/	/	-	640	150	-		
21	6532	330	264	-	/	/	/	/	/	/	/	-	640	150	7/1/2556		
22	6535	322.4	259.9	-	/	/	/	/	/	/	/	-	650	160	7/1/2556		
23	6538	306	268.8	-	/	/	/	/	/	/	/	-	680	190	-		
24	6541	324.4	259.5	-	/	/	/	/	/	/	/	-	690	160	7/1/2556		
25	6544	326.6	261.2	-	/	/	/	/	/	/	/	-	680	170	-		
26	6547	310	248	-	/	/	/	/	/	/	/	-	680	180	-		
27	6550	306	244.8	-	/	/	/	/	/	/	/	-	900	180	7/1/2556		
28	6553	309	242.4	-	/	/	/	/	/	/	/	-	900	190	7/1/2556		
29																	
30																	
31																	

DATE  
SINCE 1/1/14  
C-2



ระบบน้ำเสียแบบแอคทีฟเต็ดสลัดจ์(Activated Sludge)

สถิติและข้อมูลที่เกิดขึ้นจากโรงแอมมารี ภูเก็ต																	
วัน เดือน ปี	ปริมาณการใช้ไฟฟ้าของระบบบำบัดน้ำเสีย (หน่วย)	ปริมาณการใช้น้ำในทุกกิจกรรมของแหล่งกำเนิดมลพิษ(ลบ.ม.)	ปริมาณน้ำเสียที่เข้าระบบบำบัดน้ำเสีย (ลบ.ม.)	การระบายน้ำทิ้งจากระบบบำบัดน้ำเสีย (ระบาย/ไม่ระบาย)	การทำงานของระบบบำบัดน้ำเสีย							ปริมาณเชื้อเพลิงในบ่อเพาะเชื้อ (ลบ.ม./วัน)	ACP		ARP	ปัญหาอุปสรรคและแนวทางแก้ไข	ลายมือชื่อผู้บันทึก
					ระบบบำบัดน้ำเสีย(ปกติ/ผิดปกติ)	เครื่องสูบน้ำ(ปกติ/ผิดปกติ)	เครื่องเติมอากาศ(ปกติ/ผิดปกติ)	เครื่องฟัดคลอรีน 10 เปอร์เซนต์(ปกติ/ผิดปกติ)	หัวจ่ายอากาศ(ปกติ/ผิดปกติ)	เครื่องสูบลดคอน(ปกติ/ผิดปกติ)	สีของเชื้อจุลินทรีย์สีน้ำตาล(ปกติ/ผิดปกติ)		ค่าจุลินทรีย์ในระบบ (SV30)				
1	6556	319	249.6	-	/	/	/	/	/	/	/	-	920	210	-		
2	6559	292	233.6	-	/	/	/	/	/	/	/	-	930	210	-		
3	6562	291	232.8	-	/	/	/	/	/	/	/	-	930	200	-		
4	6565	274	219.2	-	/	/	/	/	/	/	/	-	950	180	-		
5	6568	273	218.4	-	/	/	/	/	/	/	/	-	950	180	ปริมาณน้ำมาก		
6	6571	276	220.8	-	/	/	/	/	/	/	/	-	970	190	ปริมาณน้ำมาก		
7	6574	289	231.2	-	/	/	/	/	/	/	/	-	950	190	ปริมาณน้ำน้อย		
8	6577	349	279.6	-	/	/	/	/	/	/	/	-	980	200	ปริมาณน้ำน้อย		
9	6580	319	255.2	-	/	/	/	/	/	/	/	-	980	200	ปริมาณน้ำน้อย		
10	6583	276	220.8	-	/	/	/	/	/	/	/	-	980	200	ปริมาณน้ำน้อย		
11	6586	302	241.6	-	/	/	/	/	/	/	/	-	900	220	ปริมาณน้ำน้อย		
12	6589	268	214.4	-	/	/	/	/	/	/	/	-	800	220	ปริมาณน้ำน้อย		
13	6592	292	233.6	-	/	/	/	/	/	/	/	-	970	200	ปริมาณน้ำน้อย		
14	6595	271	216.8	-	/	/	/	/	/	/	/	-	950	210	-		
15	6598	275	236	-	/	/	/	/	/	/	/	-	950	210	-		
16	6601	376	316.8	-	/	/	/	/	/	/	/	-	930	200	-		
17	6604	371	319.2	-	/	/	/	/	/	/	/	-	930	200	ปริมาณน้ำน้อย		
18	6607	289	231.2	-	/	/	/	/	/	/	/	-	900	190	ปริมาณน้ำมาก		
19	6610	251	200.8	-	/	/	/	/	/	/	/	-	900	190	ปริมาณน้ำ		
20	6613	316	252.8	-	/	/	/	/	/	/	/	-	900	190	ปริมาณน้ำ		
21	6616	325	260	-	/	/	/	/	/	/	/	-	680	180	ปริมาณน้ำ		
22	6619	294	235.2	-	/	/	/	/	/	/	/	-	680	180	ปริมาณน้ำมาก		
23	6622	319	255.2	-	/	/	/	/	/	/	/	-	680	180	ปริมาณน้ำน้อย		
24	6625	289	229.6	-	/	/	/	/	/	/	/	-	690	180	ปริมาณน้ำน้อย		
25	6628	306	244.8	-	/	/	/	/	/	/	/	-	650	150	-		
26	6631	295	236	-	/	/	/	/	/	/	/	-	690	150	-		
27	6634	329	263.2	-	/	/	/	/	/	/	/	-	650	150	ปริมาณน้ำน้อย		
28	6637	318	254.4	-	/	/	/	/	/	/	/	-	900	200	ปริมาณน้ำน้อย		
29	6640	310	248	-	/	/	/	/	/	/	/	-	900	200	ปริมาณน้ำน้อย		
30	6643	326	260.8	-	/	/	/	/	/	/	/	-	970	200	ปริมาณน้ำน้อย		
31	6646	328	262.4	-	/	/	/	/	/	/	/	-	920	190	ปริมาณน้ำน้อย		



### ระบบนำเสียแบบแอคทิเวเต็ดสลัดจ์(Activated Sludge)

**สถิติและข้อมูลที่เกิดขึ้นจากโรงแรมมารี ภูเก็ต**

[illegible]



ระบบน้ำเสียแบบแอคทีเวเต็ดสลัดจ์ (Activated Sludge)

สถิติและข้อมูลที่เกิดขึ้นจากโรงแอมมารี ภูเก็ต																	
วัน เดือน ปี	ปริมาณการใช้ไฟฟ้าของระบบบำบัดน้ำเสีย (หน่วย)	ปริมาณการใช้ไฟฟ้าในทุกกิจกรรมของแหล่งกำเนิดมลพิษ(ลบ.ม.)	ปริมาณน้ำเสียที่เข้าระบบบำบัดน้ำเสีย (ลบ.ม.)	การระบายน้ำทิ้งจากระบบบำบัดน้ำเสีย (ระบาย/ไม่ระบาย)	การทำงานของระบบบำบัดน้ำเสีย							ปริมาณเชื้อในท่อเพาะเชื้อ (ลบ.ม./วัน)	ACP		ARP	ปัญหาอุปสรรคและแนวทางแก้ไข	ลายมือชื่อผู้บันทึก
					ระบบบำบัดน้ำเสีย(ปกติ/ผิดปกติ)	เครื่องสูบน้ำ (ปกติ/ผิดปกติ)	เครื่องเติมอากาศ (ปกติ/ผิดปกติ)	เครื่องฟัดคลอรีน 10 เปอร์เซนต์ (ปกติ/ผิดปกติ)	หัวจ่ายอากาศ (ปกติ/ผิดปกติ)	เครื่องสูบลดคอน (ปกติ/ผิดปกติ)	สียงของเชื้อจุลินทรีย์สีน้ำตาล (ปกติ/ผิดปกติ)		ค่าจุลินทรีย์ในระบบ (SV30)				
May 1	6738	262	209.6	-	/	/	/	/	/	/	/	-	630	150		ปริมาณเชื้อในท่อเพาะเชื้อ	
2	6741	302	241.6	-	/	/	/	/	/	/	/	-	630	180		ปริมาณเชื้อในท่อเพาะเชื้อ	
3	6744	319	255.2	-	/	/	/	/	/	/	/	-	600	200		ปริมาณเชื้อในท่อเพาะเชื้อ	
4	6747	297.5	238	-	/	/	/	/	/	/	/	-	630	210		ปริมาณเชื้อในท่อเพาะเชื้อ	
5	6749	293.4	232.7	-	/	/	/	/	/	/	/	-	680	200		ปริมาณเชื้อในท่อเพาะเชื้อ	
6	6752	312	245	-	/	/	/	/	/	/	/	-	680	210		ปริมาณเชื้อในท่อเพาะเชื้อ	
7	6755	303	242	-	/	/	/	/	/	/	/	-	700	190		ปริมาณเชื้อในท่อเพาะเชื้อ	
8	6757	301	241	-	/	/	/	/	/	/	/	-	720	180		ปริมาณเชื้อในท่อเพาะเชื้อ	
9	6759	314	251	-	/	/	/	/	/	/	/	-	720	180		ปริมาณเชื้อในท่อเพาะเชื้อ	
10	6762	321	257	-	/	/	/	/	/	/	/	-	740	190		ปริมาณเชื้อในท่อเพาะเชื้อ	
11	6763	329	261	-	/	/	/	/	/	/	/	-	700	210		ปริมาณเชื้อในท่อเพาะเชื้อ	
12	6767	316	253	-	/	/	/	/	/	/	/	-	700	220		ปริมาณเชื้อในท่อเพาะเชื้อ	
13	6770	319	255.2	-	/	/	/	/	/	/	/	-	720	220		ปริมาณเชื้อในท่อเพาะเชื้อ	
14	6772	322.4	257.7	-	/	/	/	/	/	/	/	-	730	200		ปริมาณเชื้อในท่อเพาะเชื้อ	
15	6775	330	264	-	/	/	/	/	/	/	/	-	730	210		ปริมาณเชื้อในท่อเพาะเชื้อ	
16	6777	310	248	-	/	/	/	/	/	/	/	-	760	200		ปริมาณเชื้อในท่อเพาะเชื้อ	
17	6779	295	236	-	/	/	/	/	/	/	/	-	760	220		ปริมาณเชื้อในท่อเพาะเชื้อ	
18	6781	289	229.6	-	/	/	/	/	/	/	/	-	760	230		ปริมาณเชื้อในท่อเพาะเชื้อ	
19	6784	292	233.6	-	/	/	/	/	/	/	/	-	780	220		ปริมาณเชื้อในท่อเพาะเชื้อ	
20	6788	285	226	-	/	/	/	/	/	/	/	-	770	200		ปริมาณเชื้อในท่อเพาะเชื้อ	
21	6789	287	231	-	/	/	/	/	/	/	/	-	730	300		ปริมาณเชื้อในท่อเพาะเชื้อ	
22	6790	292	233.6	-	/	/	/	/	/	/	/	-	720	250		ปริมาณเชื้อในท่อเพาะเชื้อ	
23	6792	276	220.8	-	/	/	/	/	/	/	/	-	770	190		ปริมาณเชื้อในท่อเพาะเชื้อ	
24	6794	297.5	238	-	/	/	/	/	/	/	/	-	750	200		ปริมาณเชื้อในท่อเพาะเชื้อ	
25	6796	282	230	-	/	/	/	/	/	/	/	-	600	180		ปริมาณเชื้อในท่อเพาะเชื้อ	
26	6798	297.8	235	-	/	/	/	/	/	/	/	-	760	200		ปริมาณเชื้อในท่อเพาะเชื้อ	
27	6800	301	240.1	-	/	/	/	/	/	/	/	-	700	250		ปริมาณเชื้อในท่อเพาะเชื้อ	
28	6801	298.6	242	-	/	/	/	/	/	/	/	-	690	240		ปริมาณเชื้อในท่อเพาะเชื้อ	
29	6803	293.4	234.7	-	/	/	/	/	/	/	/	-	600	240		ปริมาณเชื้อในท่อเพาะเชื้อ	
30	6805	301	241	-	/	/	/	/	/	/	/	-	680	210		ปริมาณเชื้อในท่อเพาะเชื้อ	
31	6807	295	236	-	/	/	/	/	/	/	/	-	630	200		ปริมาณเชื้อในท่อเพาะเชื้อ	



